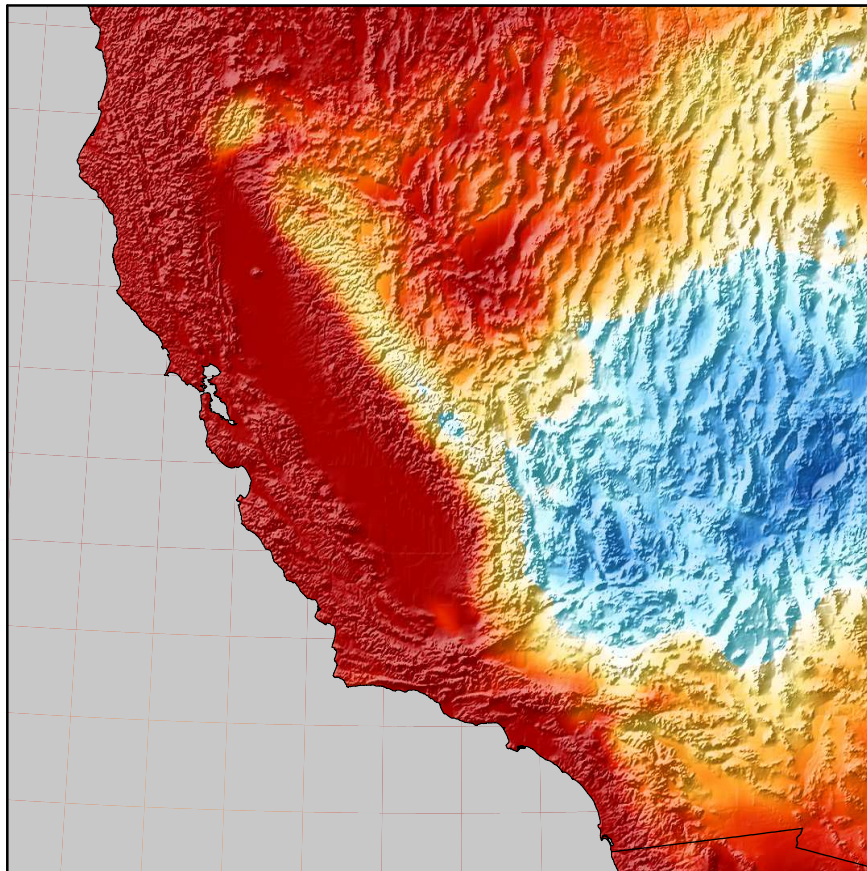
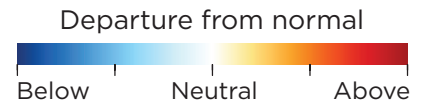


2016 Q1 Forecast

Vaisala's U.S. Wind Performance Forecast provides a view of future wind speeds for the first quarter of 2016 across the country as well as a close up look at the strong anomalies anticipated in California and portions of the Southwest. Blue indicates below normal conditions while red indicates above normal conditions. The small black dots show the locations of operational wind projects.



Southwest Coast

The map above offers a 5-month ahead perspective on wind anomalies for Q1 2016 based on the wide agreement of the weather community and global climate models that an El Niño will persist and continue to strengthen throughout the end of the year and the beginning of next year.

The forecast was created by examining several similar events from three of the leading reanalysis datasets, each representing 35 years, then generating a composite prediction based on the historical information.

We gave special attention to the Southwest, California in particular, due to the strong affect of El Niño on the West Coast and the high density of operational wind farms in the region.

The scale used for this map does not use numerical percentages to depict deviations from average, but rather indicates the likelihood of experiencing above or below average wind conditions. This far in advance the forecast captures the broad pattern and is continually refined as we move forward in time.