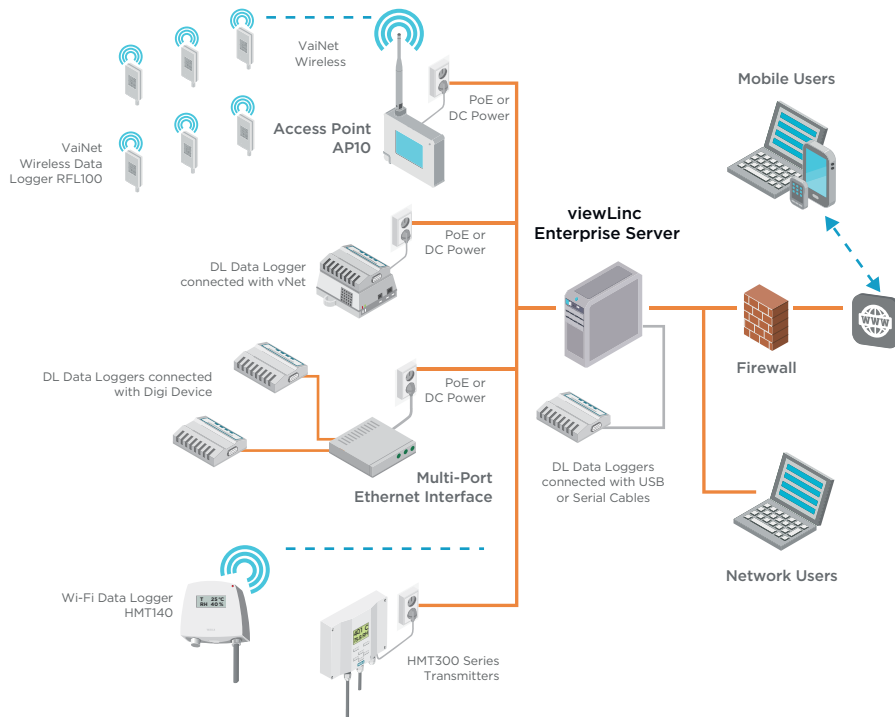




Vaisala viewLinc Enterprise Server Version 5.0



Features

- Software for continuous monitoring of temperature, humidity and other parameters
- Eight language versions, ideal for multi-site use and global monitoring
- Preconfigured and custom reports
- Configurable alarm notifications by email, SMS, or visual and audible alarms
- Scheduled threshold alarming and alarm notification delivery times to accommodate maintenance periods or work shifts
- Interactive tours – built-in guidance for first-time users

Vaisala viewLinc Enterprise Server allows you to network several types of Vaisala data loggers using a combination of wired and wireless connections. It supports small installations of one or two measurement points, or large systems that monitor thousands of locations. Designed for regulated and critical environmental monitoring, viewLinc ensures data integrity with a secure audit trail, access controls, encryption, and authorization levels that fulfill regulatory requirements.

Continuous Reliability

viewLinc runs as a Microsoft® Windows® service. If you are required to reboot your server, the viewLinc service restarts automatically. Users log in to viewLinc on any network computer or mobile device with a supported browser and can display viewLinc in several languages: English, German, French, Portuguese, Spanish, Swedish, Chinese, and Japanese. viewLinc supports UTF-8 compliant multi-byte character sets.

Licensing

A license key is required for each viewLinc Enterprise Server or Device Host installation (the number of devices permitted is defined by the license key).

Upgrading

Previous versions of viewLinc, 3.6.1 and higher, can upgrade to 5.0 directly. Depending on the server/database size, upgrade may take a few minutes or several hours (4 to 6).

System Requirements

- A dedicated server continuously available 24/7 to run viewLinc Enterprise Server software.
- One or more Vaisala data loggers, Vaisala wireless data loggers, or Vaisala HMT300 series transmitters.
- Vaisala cables, for connecting data loggers and setting up wireless transmitters.

- (optional) Additional dedicated or shared servers if you plan to manage devices at multiple sites (running viewLinc Device Host software).
- (optional) Remote display terminals, if you plan to provide monitoring in sites without user PCs.
- (optional) vNet and multi-port Ethernet devices, for connecting Vaisala data loggers to viewLinc through Ethernet.

Technical Data

Server Requirements

Availability	24 hours a day, 7 days a week
Server management	Connected to an uninterruptible power supply (UPS)
	Backup solution with support for open file backup
	Synchronizes time with a Network Time Protocol (NTP) server
Operating System	Windows Server® 2016 Windows Server® 2012 R2 (64-bit) Windows Server® 2008 R2 (64-bit) Windows® 10 (64-bit)
Virtual server support	VMWare
Application disk space	350 MB
Database disk space ¹⁾	200 KB/data point ²⁾ /day
Network traffic ³⁾	Approx. 100 KB/minute/device
Web interface protocol	TLS 1.2
Security certificate for web interface	Authorized TLS certificate and key ⁴⁾
Email encoding	RFC 2047
Secure email protocol	TLS 1.2

- 1) Not applicable to Device Host installation.
 2) Data points are device channels monitoring and recording data.
 3) Depends on number of devices, system configuration and type of communication devices used.
 4) Self-signed certificate and key can be generated during installation.

Requirements Based on System Size

System Size in Data Points	< 20	21 ... 399	400+
Dedicated or shared server	Either	Either	Dedicated
CPU	1.6 GHz dual core	1.6 GHz dual core	3.2 GHz dual core
RAM	8 GB	12 GB	16 GB
Disk space increase/year	1.5 GB/year for 20 data points	15 GB/year for 200 data points	75 GB/year for 1000 data points
Continuous free disk space for reports (1 month duration with 1 minute scan/sample)	2 GB	4 GB	10 GB

Client Requirements

Internet browser	Google Chrome™ Microsoft® Internet Explorer® 11 Microsoft® Edge™
Computer clients	Any network computer with a supported Internet browser, a minimum 2.4 GHz CPU, and 4 GB of RAM.
Display and tablet clients	Touchscreen or mouse-operated panel with a supported Internet browser. Must be connected to the same network as viewLinc Enterprise Server.

Device Connection Requirements

Wireless Devices

RFL100 series ¹⁾	Connects using Vaisala VaiNet protocol. Requires installation of an APIO access point.
HMT140 series	Connects using Wi-Fi protocol. Requires configuration with an HMT140 configuration cable.
300-series transmitter	Connects using WLAN or LAN interface.

Wired Devices

DL series using vNet device	vNet Power-over-Ethernet devices are 802.3af compliant and work with both end-point and mid-span systems. viewLinc Aware automatically detects and configures vNet devices. Power usage: Class 1 (0.75 to 1W, lowest power class) ²⁾ Requires vNet device drivers (provided).
-----------------------------	--

DL series using multi-port Ethernet device	Power usage: Class 2 (4 to 6 W). Devices must be configured with static or reserved IP addresses. If the devices are being installed on different subnets, they need to be configured before being installed. Ethernet device drivers must be installed on each server used to connect Vaisala devices.
--	---

DL series using serial cable	Connect devices directly to viewLinc Enterprise Server or viewLinc Device Host using a serial-to-logger cable. Requires serial COM ports. ³⁾
------------------------------	---

DL series using USB cable	Connect devices directly to viewLinc Enterprise Server or viewLinc Device Host using a USB-to-logger cable. Requires USB ports. ³⁾
---------------------------	---

- 1) VaiNet devices not available in all regions.
 2) vNet devices maintain a low power rating by operating at a network speed of 10 Mbps. To ensure your network devices can operate at different speeds, set the network speed for the connected vNet port (see vNet User Guide).
 3) If the viewLinc Enterprise Server is installed on a virtual machine (VM), note that only VMWare® has been tested with viewLinc-supported modems. Please contact Vaisala technical support for list of currently supported modems.

Network Ports

Port	Port Type	Used By
443	TCP	Client connections to user interface
771	TCP	vNet and multi-port Ethernet devices
950	TCP	Moxa serial-to-WiFi devices
6767	UDP	HMT140
12600	TCP/UDP	VaiNet access points, viewLinc Enterprise Server connection with vNet or Device Host

viewLinc 5.0 includes software developed by the OpenSSL Project for use in the OpenSSL Toolkit.

<http://www.openssl.org/>



www.vaisala.com

Published by Vaisala | B211708EN-E © Vaisala 2019

All rights reserved. Any logos and/or product names are trademarks of Vaisala or its individual partners. Any reproduction, transfer, distribution or storage of information contained in this document is strictly prohibited. All specifications — technical included — are subject to change without notice.