



VAISALA

Did You Know?

Dropsondes are dropped in both the eye wall (to measure highest **wind speeds**) and the **eye** (to measure minimum **pressure**).

Dropsondes were developed in the **1940s**

Dropsondes measure:

 Wind Speed  Pressure  Humidity
 Direction  Temperature

A Hurricane Hunter mission drops on average

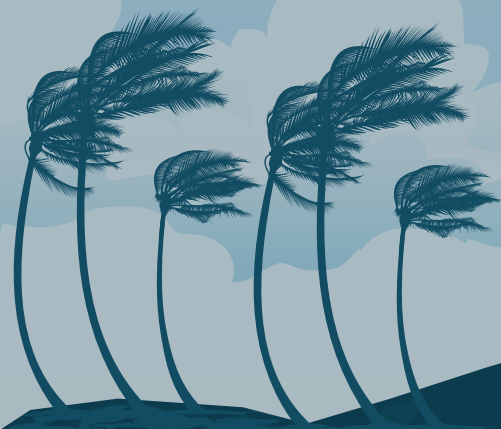
20 single-use dropsondes

Each mission lasts approximately

11 hours

Dropsondes provide a

30% more accurate forecast*



* Hurricane Hunters