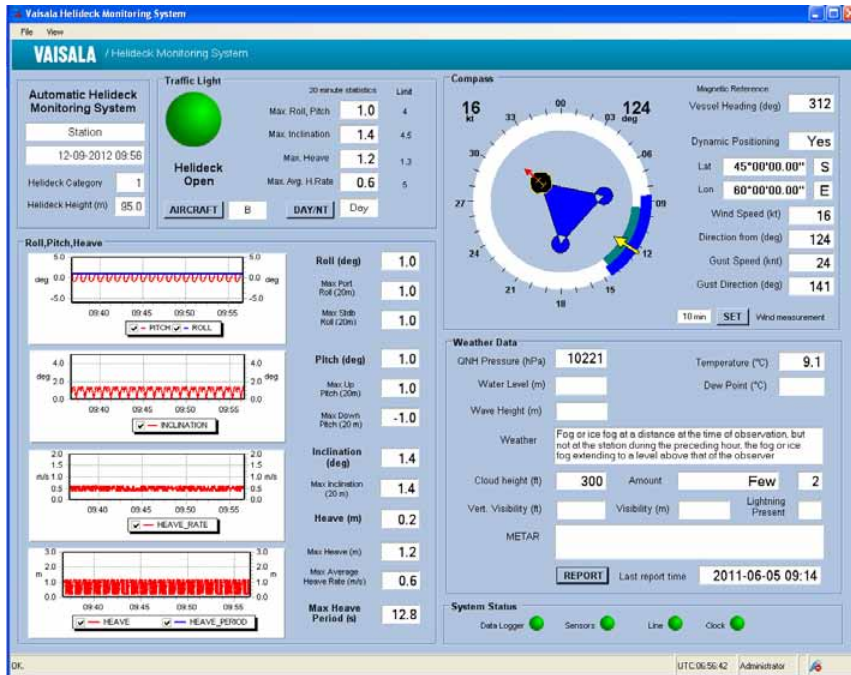


Vaisala Helideck Monitoring Software MCC437



Features and Benefits

- CAP437 compliant
- Displays and logs data as a part of Vaisala Helideck Monitoring System (HMS)
- Easy to install and operate
- Provides data for various helideck operations
- Visual and audible alarms
- Traffic light feature for indicating helideck status
- Helideck and aviation report
- Remote client PC display option

Application

Vaisala Helideck Monitoring Software MCC437 is PC software designed for use with the Vaisala Helideck Monitoring System (HMS). It is used for displaying, storing, editing, and reporting the meteorological and environmental measurement data needed for planning helideck operations as well as for general weather information on vessels and offshore installations. Vaisala Helideck Monitoring System can be fully automatic or manned.

Real-Time Display

Vaisala Helideck Monitoring Software presents meteorological data in numerical and graphical formats. Users can choose from a range of engineering units when displaying the latest measurement values on the easy-to-use default screen layout. There is also an option to have modified data labels and data fields if some measurement values need to be added or removed from the display.

Depending on the HMS in use, a complete customization option is available to tailor the screen layout to the specific needs of the customer.

The default weather parameters monitored include wind speed and direction (including gust winds), visibility and present weather, air temperature and dew point, atmospheric pressure, cloud height, vertical visibility, sky condition, lightning, water level and wave height. Modifications to display other weather parameters are also available depending on the HMS in use. Wind speed and direction can be displayed using instant, two-minute and ten-minute statistics. Observation data can also be displayed as a real-time graph.

Traffic light is provided to indicate helideck status, open or closed, based on exceeded roll, pitch and heave rate preset limits. Visual and audible alarms provide warnings of critical weather conditions or other important issues such as sensor or

system failure. It is also possible to create custom alarms based on selected parameters.

Data Archiving and Viewing

The application automatically stores data chronologically as ASCII log files, and continues to run in the background so that data collection can continue even when the user interface is closed. The ASCII log files can be exported to external applications and collected data can also be viewed in tabular or graphical formats. The overall data collection status is shown in the operational status report.

Data Distribution

The data distribution feature allows several client PCs to gather weather data from the master PC.

The file transfer feature allows the latest data files to be transferred to up to two different servers using FTP protocol.

Reports

The software automatically generates a helideck report that can be emailed to an onshore helicopter base. The report includes data on the environmental conditions on site as well as additional information on the helideck including location and fuel availability. The operator can

also manually edit the data and add observations and notes to the report.

The system can automatically generate the CAP437 compliant METAR report.

Technical Data

Minimum Hardware Requirements

Personal computer	Desktop/Laptop
Processor	2.0+ GHz
RAM	1024 MB
Hard disk space	Software: 100 MB Data storage 1 GB/Year
Ports	Ethernet/LAN Serial/USB port (may require an adapter)
Monitor resolution	1024 x 768 pixels (or higher)
Drives	CD-ROM required for installation

Operating Systems

Windows 7, Windows XP, Windows 2008 Server,
Windows 2003 Server

Communication options between AWS and PC

Serial connection via RS-232 port
Serial connection via RS-485 port (requires converter)
USB connection via RS-232/RS-485 (requires converter)
TCP/IP via Ethernet (requires converter)

Features

Monitored default weather parameters:

- Wind speed and direction (including gusts)
- Visibility and present weather
- Air temperature and dew point
- Atmospheric pressure
- Cloud height, vertical visibility and sky condition
- Lightning
- Water level
- Wave height

Data collection:

- Automatic background data collection
- Data validation
- Statistical calculations
- Meteorological calculations

Real-time display:

- Text boxes, graphs, labels
- Alarms
- Wind rose
- Full-screen mode

Reporting:

- CAP437 compliant AUTOMETAR
- Helideck report

Data logging and viewing:

- Received data log
- Observation parameter log
- Event log
- Tabular view
- Graphical view
- Operational view

Data distribution:

- Support for clients PCs
- FTP client support

VAISALA

www.vaisala.com

Please contact us at
www.vaisala.com/requestinfo



Scan the code for
more information

Ref. B211220EN-A ©Vaisala 2012

This material is subject to copyright protection, with all copyrights retained by Vaisala and its individual partners. All rights reserved. Any logos and/or product names are trademarks of Vaisala or its individual partners. The reproduction, transfer, distribution or storage of information contained in this brochure in any form without the prior written consent of Vaisala is strictly prohibited. All specifications — technical included — are subject to change without notice.

