

Operation of Multistage Drum Displacement (DD) Washers and Improved Efficiency with Continuous Process Measurements
Pasi Immonen, Andritz Oy

ANDRITZ

Pulp & Paper

Operation of multi-stage Drum Displacer and optimization possibilities with continuous process measurements



www.andritz.com

We accept the challenge!

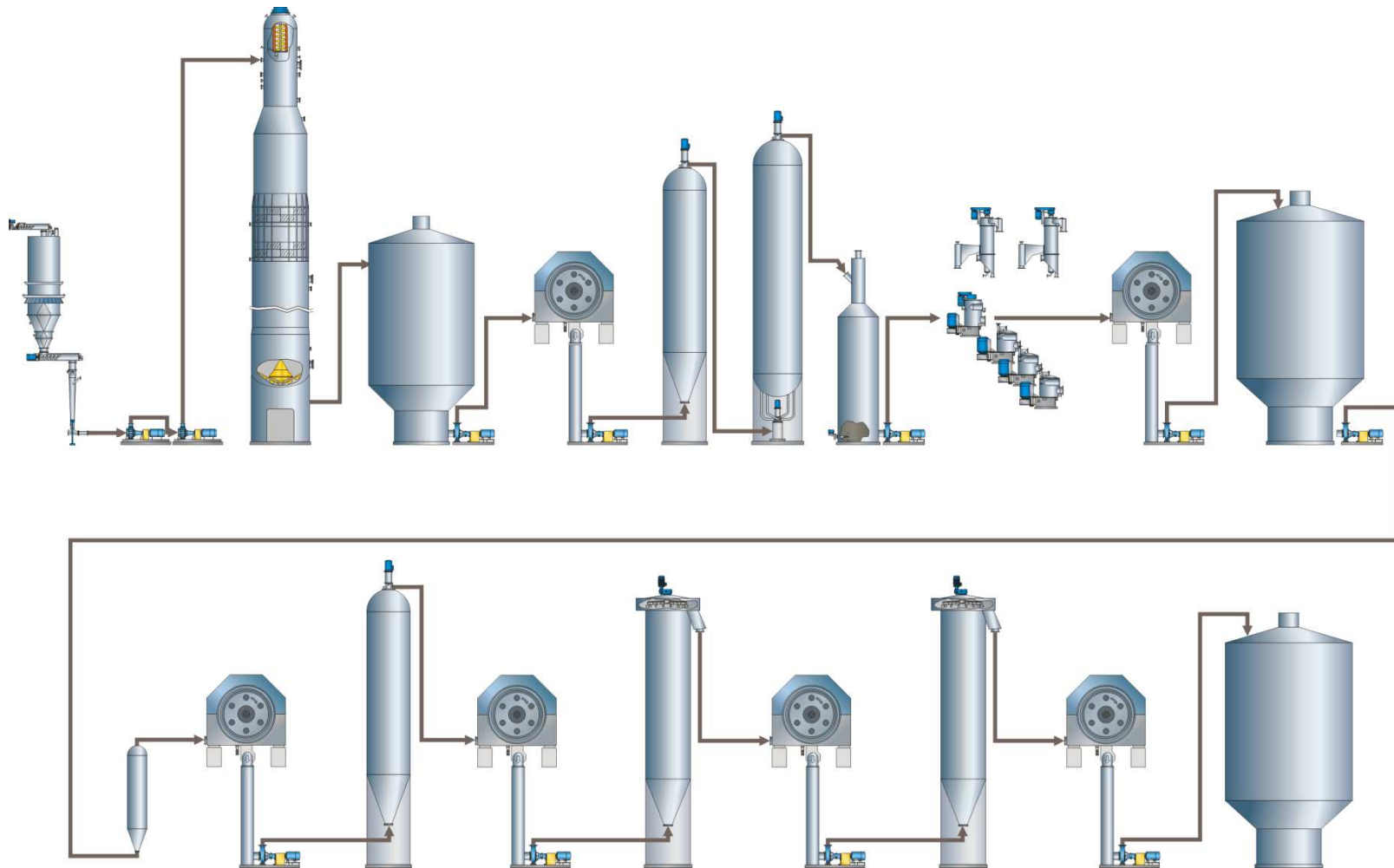
DD Washer main features

- Compact and efficient
- Environmentally friendly
- Fractional washing - enables innovative circulation of filtrates with different properties
- Enables a wide variety of washing configurations in a single Drum Displacer[®]
- Wide inlet consistency range
- Low power consumption
- Low filtrate fiber content
- Wide product range
- High unit capacity



Applications

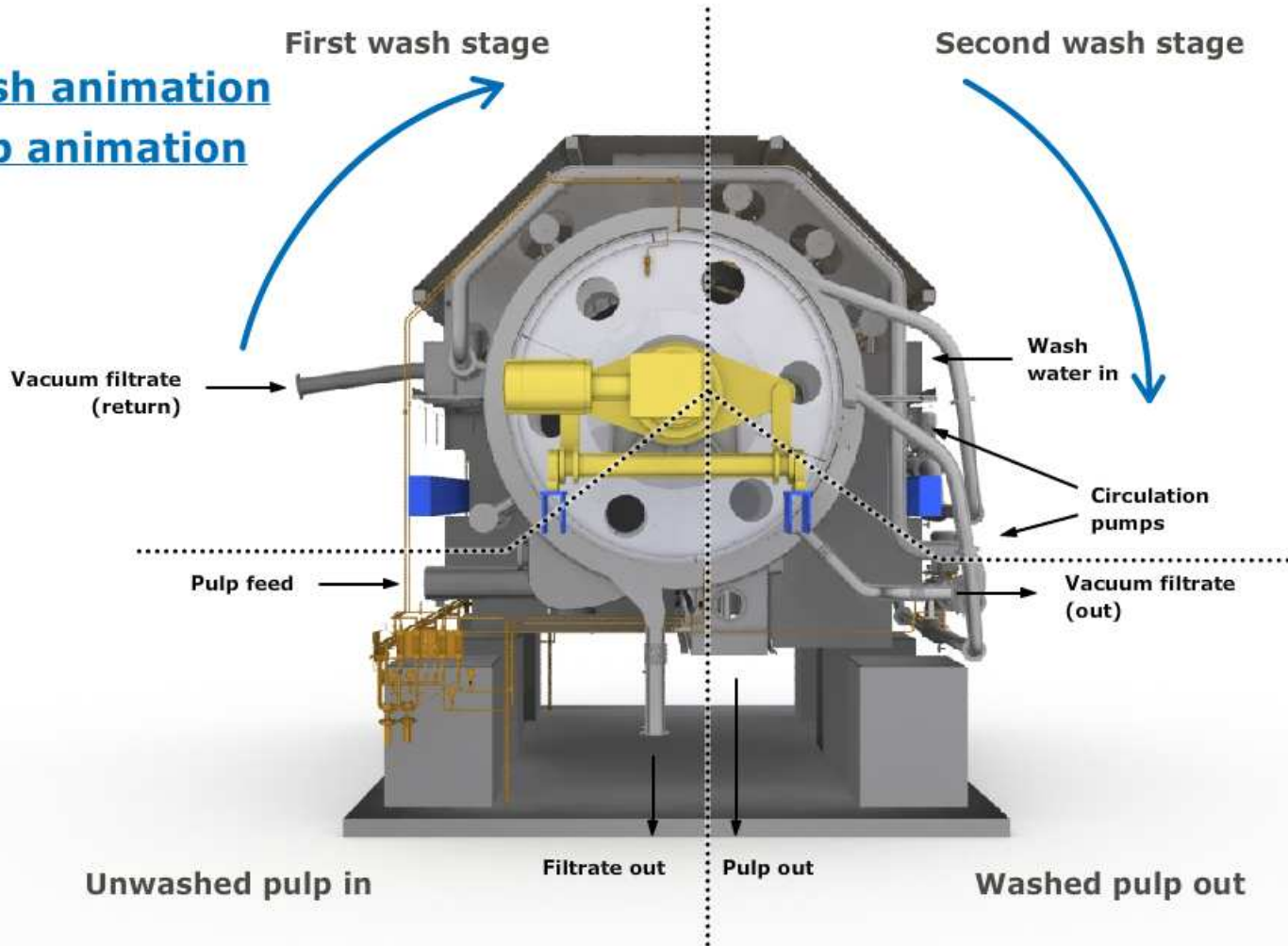
DD Washers in fiberline



Operation principle (3)

2-stage DD Washer

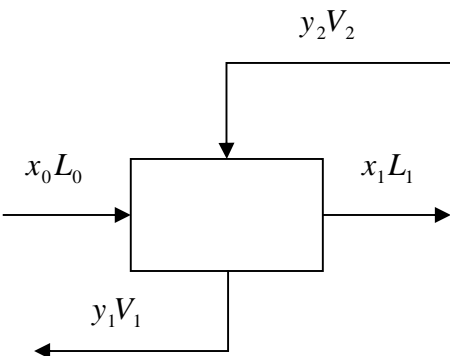
- [Wash animation](#)
- [Pulp animation](#)



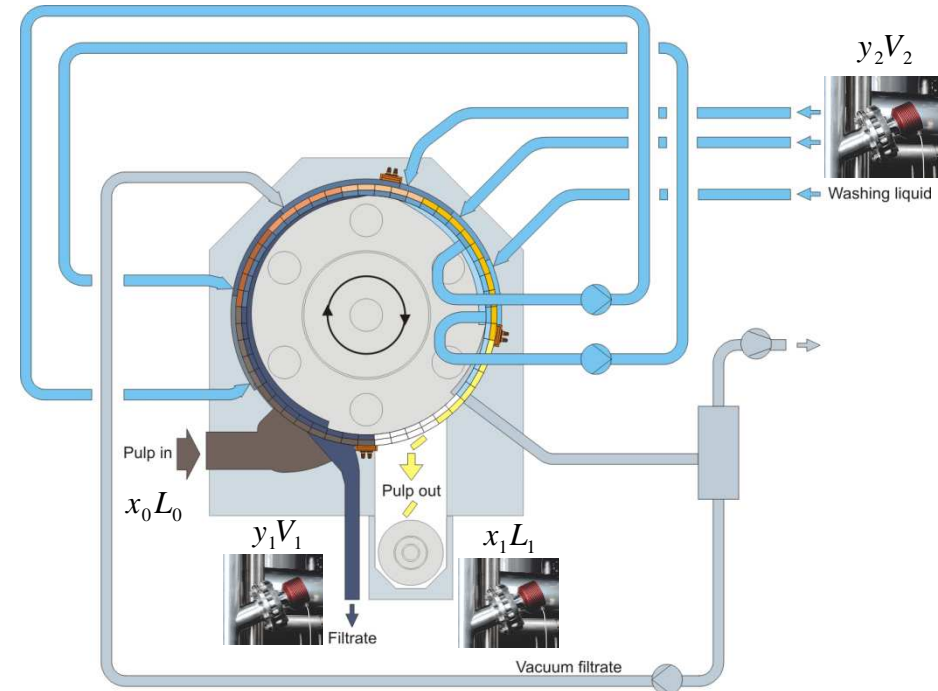
Washing Efficiency (1)

Washing efficiency with refractive index measurement

- The modified Nordén efficiency factor



$$E_{10} = \frac{LN \frac{L_0 (x_0 - y_1)}{L_1 (x_1 - y_2)}}{LN \left(1 + \frac{DF}{Z}\right)} = \frac{LN \left(1 + \frac{DF (y_1 - y_2)}{L_1 (x_1 - y_2)}\right)}{LN \left(1 + \frac{DF}{Z}\right)}$$



Washing Efficiency (2)

DD Washer efficiencies

Number of Washing Stages	Feed consistency %		Discharge consistency %	E10 value at DF 2.5
	LC-Feed	MC-Feed		
1-Stage	4–6	8–10	12–16	4–6
1,5-Stage	4–6	8–10	12–16	6–8
2-Stage	4–6	8–10	12–16	8–11
3-Stage	4–6	8–10	12–16	11–13
4-Stage	4–6	8–10	12–16	13–16

Washing Efficiency (3)

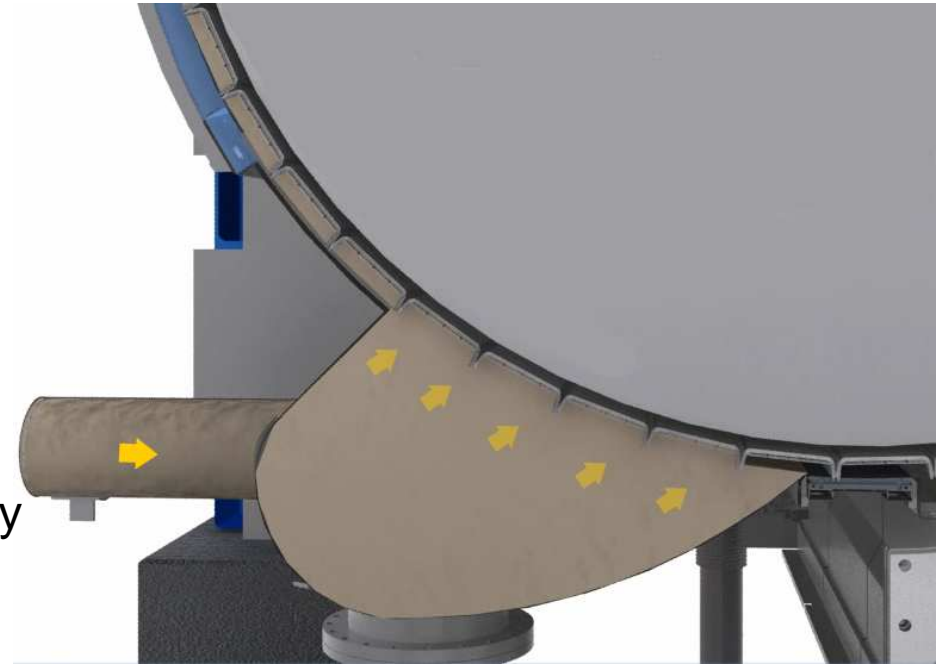
Case1: Feed box

Cake formation in the feed box is the base for efficient washing.

Main targets

- pocket totally filled with pulp
- air lead through the end valve to exhaust system
- porous cake with high wash consistency

Optimal feed pressure/consistency combination can be found with online washing efficiency calculation



Washing Efficiency (4)

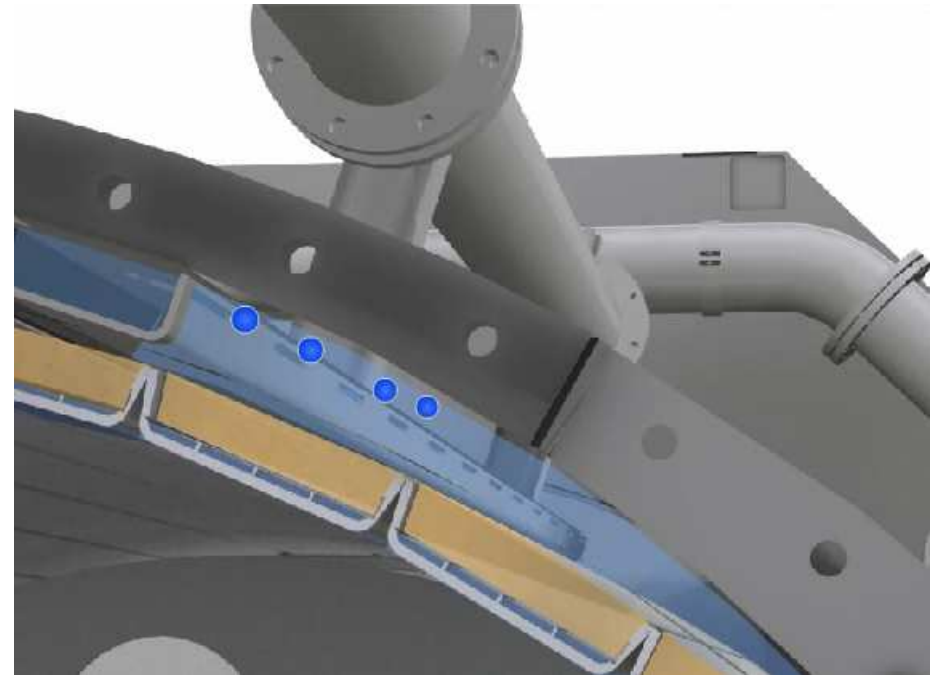
Case2: Wash Sector

Right drainage demand is the key for efficient displacement washing.

Main targets:

- pressure difference over the cake on desired level at every section including wash filtrate circulation

Optimal dilution factor can be found with online washing efficiency calculation



Washing Efficiency (5)

Case3: Monitoring

Despite following the recommended operating procedures, malfunctions may occur, due to wear and tear or other mechanical faults.

Main targets:

- notice hidden faults as ASAP

Possible mechanical faults and consequent changes in the operation of the washer can be seen immediately with online washing efficiency calculation



DD Washer Efficiency with online measurements

Conclutions

- The modified Nordén efficiency factor for DD Washers can be calculated online based on the refractive index measurement
- The result can be used to achieve optimal running conditions by changing operating parameters and monitoring the changes
- Possible mechanical faults and consequent changes in the operation of the washer can be seen immediately with online washing efficiency calculation
- Online measurement of washing efficiency has positive impact both economically and environmentally





Legal Disclaimer

All data, information, statements, photographs, and graphic illustrations contained in this presentation are without any obligation to the publisher and raise no liabilities to ANDRITZ AG or any affiliated companies, nor shall the contents in this presentation form part of any sales contracts, which may be concluded between ANDRITZ GROUP companies and purchasers of equipment and/or systems referred to herein.

© ANDRITZ AG 2011. All rights reserved. No part of this copyrighted work may be reproduced, modified or distributed in any form or by any means, or stored in any database or retrieval system, without the prior written permission of ANDRITZ AG or its affiliates. Any such unauthorized use for any purpose is a violation of the relevant copyright laws.

ANDRITZ

Pulp & Paper

Fiber and Chemical Division

Any questions?

For further information
please contact:

Andritz Oy – Finland
+358 20 450 5555

pulpandpaper.fi@andritz.com