

## QUICK REFERENCE GUIDE

### Mounting Bracket for Humidity Module HMM100



- Metal backplate and a plastic lid for a single HMM100 module
- Can be installed on a DIN rail

### GENERAL

The mounting bracket for HMM100 humidity modules provides convenient installation and handling protection for the HMM100. Note that the bracket does not provide IP rated protection.

The mounting bracket includes the following parts:

- metal mounting bracket with four screws for attaching the module
- plastic lid with two screws
- screws and clamps for holding the probe cable and the power/signal cable
- Abiko connector (4.8mm push-on male terminal) to be used with unshielded power/signal cables
- DIN rail clip and screw



Figure 1 Mounting Bracket Parts

### INSTALLATION

1. Attach the module to the bracket with four screws; see Figure 2.



Figure 2 Module Mounted in the Bracket

2. Connect the power/signal cable to the screw terminals. Refer to the HMM100 User's Guide for wiring instructions.
3. Attach the probe cable and the power/signal cable to the right side of the bracket using the screws and metal clips. See Figure 3 for the suggested placement.

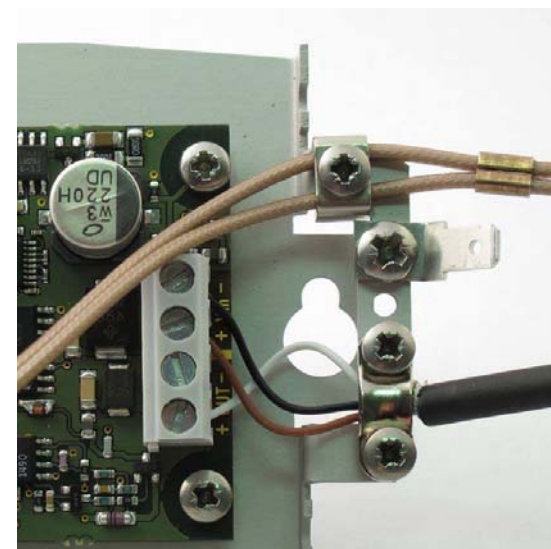


Figure 3 Connecting Cables



4. Make sure that the shield of the power/signal cable makes good contact with the bracket. If your cable is unshielded, you can provide the earth connection by using a separate cable and the Abiko connector provided (visible in Figure 3).
5. Attach the plastic lid over the bracket and tighten the two screws.
6. Mount the bracket in the desired location with two screws or using the DIN rain clip.
7. Verify the installation: power up the module and check the output reading.

## DIMENSIONS

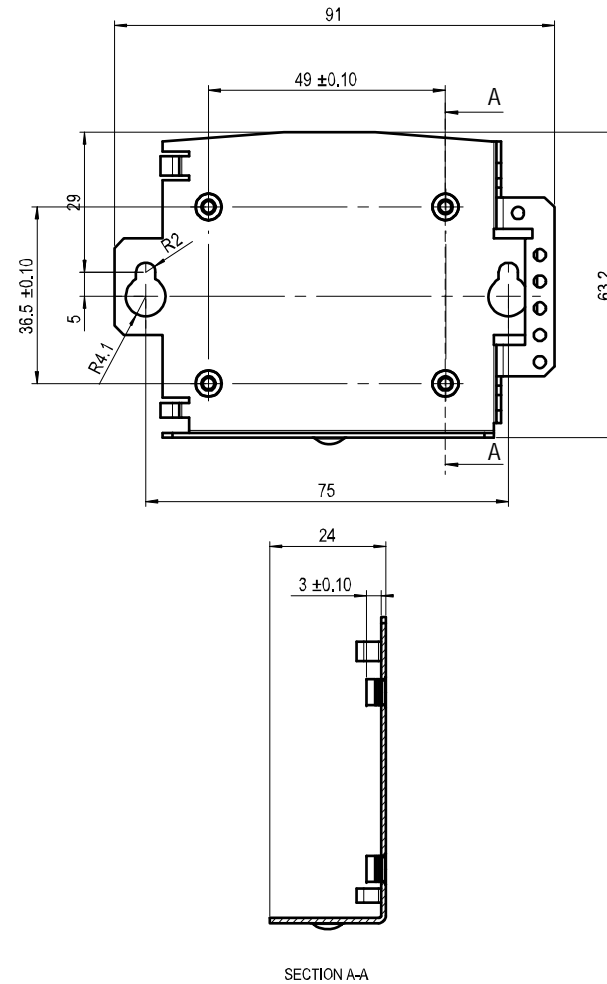


Figure 4 Bracket Dimensions