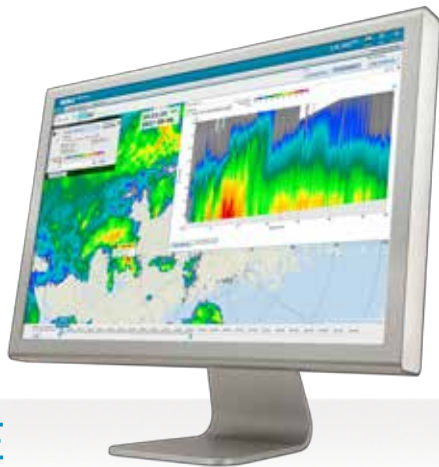


VAISALA

# IRIS

EXPERIENCE MORE



The **next** generation in weather radar software.

## **PUBLISHED BY**

Vaisala Oyj  
P.O. Box 26  
FI-00421 Helsinki  
Finland

Phone (int.): +358 9 8949 1  
Fax: +358 9 8949 2227

Try IRIS Focus at **[iris.vaisala.com](http://iris.vaisala.com)**.

© Vaisala 2017

*This material is subject to copyright protection, with all copyrights retained by Vaisala and its individual partners. All rights reserved. The reproduction, transfer, distribution or storage of information contained in this document in any form without the prior written consent of Vaisala is strictly prohibited. All specifications — technical included — are subject to change without notice.*

B211503EN-B

# Experience More

**IRIS Focus Weather Radar Software** has a modern display and a rich set of tools for viewing and analyzing your weather radar data like never before. Developed with customers, the easy-to-use interface reduces complexity and training time. IRIS Focus helps you better understand storms for quicker decisions and more accurate precipitation estimation and classification.

# Analyze Your Data Faster

IRIS Focus allows you to see more. Choose a multi-panel display or layer multiple data points from different radar products on one screen. Because we generate radar products on-demand, you can zoom in on data at the highest resolution.

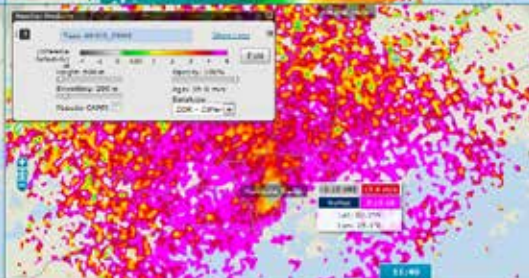
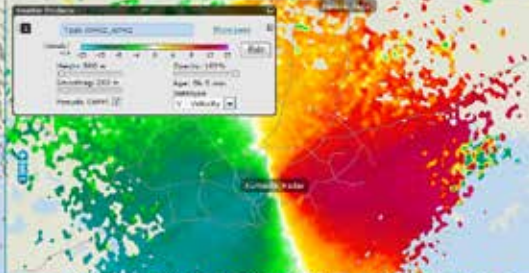
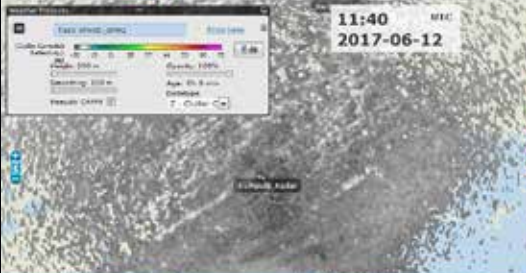
**ANALYZE YOUR DATA FASTER**



## See More with the Multi-Panel Display

- *Display up to four radar products within the same window to see all the significant details of the weather at once*
- *Synchronize time and location of displayed panels*
- *Synchronize displayed panel animation*
- *Move the cursor to a different location on the map – all displayed panels move together*

**ANALYZE YOUR DATA FASTER**



## Understand More by Overlaying Multiple Data Points

- *Layer multiple data such as radar reflectivity and radial velocity*
- *See radial winds and intensity simultaneously*
- *Set height, smoothing, opacity, and data type in layer settings*

**ANALYZE YOUR DATA FASTER**





## Weather Warnings and Alerts

- *Automatically detect weather hazards as they appear*
- *Receive an alert when a significant weather event (such as hail, wind shear, or heavy rain) appears in your area of responsibility*
- *Configure the alerts to use your terminology and language to speed up the response – no interpretation is needed*

**ANALYZE YOUR DATA FASTER**

View | Preferences | Alerts

 Filter:   

 08:04:00 UTC  
 2017-12-21


## Weather Alerts (3)

- |  |  |  |  |
|--|--|--|--|
|  | Wind Shear<br>23 m/s/min at 6.5° GL                        | Great Lakes  | <input type="button" value="Acknowledge"/> |
|  | Severe Storm<br>1.5 - 15 km VL: 18 mm<br>10 dBZ TOPS: 9 km | Great Lakes<br>Lat: 58.8°N<br>Lon: 106.6°W             | <input type="button" value="Acknowledge"/> |
|  | 1.5 - 15 km VL: 18 mm<br>10 dBZ TOPS: 10 km                | Lat: 58.8°N<br>Lon: 106.2°W                            |  |
|  | 1.5 - 15 km VL: 16 mm<br>10 dBZ TOPS: 11 km                | Lat: 59.2°N<br>Lon: 112.2°W                            |  |
|  | Severe Storm<br>1.5 - 15 km VL: 18 mm<br>10 dBZ TOPS: 9 km | Canada<br>Acknowledged by<br>Alert<br>2017-08-21 14:28 |  |

## Generate High Resolution Products On-Demand

- *Generate on-demand and pre-configured radar products*
- *Display data at the highest possible resolution for the given screen space*
- *Zoom in and data will be re-generated to increase the resolution*
- *Adjust on-demand product settings, such as CAPPI heights interactively, add smoothing, and select data variables*

**ANALYZE YOUR DATA FASTER**

23:43:04 UTC  
2017-01-10

Live CAPS - Task: WxData

23:43:04

Category:

Height:

Smoothing:

Color:

23:43:04 UTC  
2017-01-10

Live CAPS - Task: WxData

23:43:04

Category:

Height:

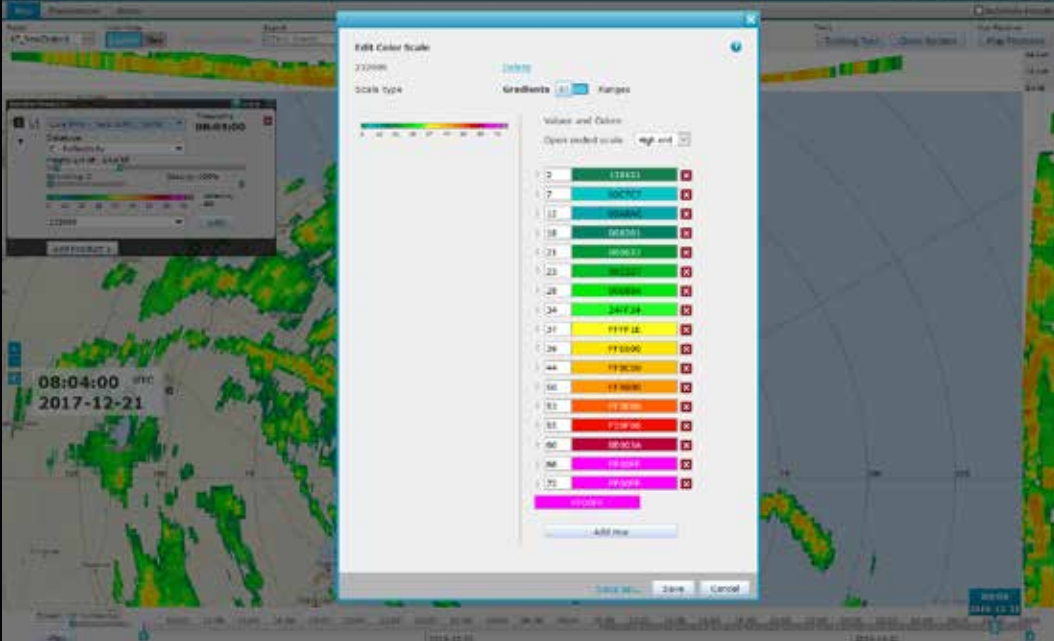
Smoothing:

Color:

## Use Color Options to Prevent Distortion

- *Use the color scale editor to design color scales that do not distort the data by falsely highlighting certain colors*
- *Color palette goes beyond traditional red, green, and blue by adding hue and luminance control*
- *Administrators can set a standard scale for sharing across an agency*

**ANALYZE YOUR DATA FASTER**



# Understand Storms to Make Better Decisions

IRIS Focus tools support quicker decision making and accurate precipitation estimation and classification. Advanced graphic display and data processing capabilities provide new ways of observing your weather radar data.

**BETTER UNDERSTANDING OF WEATHER**





## Nowcasting

- *Automated short term forecasting predicts precipitation movement and gives you time to prepare hours in advance*
- *Support forecasters by visualizing the near future*
- *Seamless integration to the on-demand product generation and user interface for the best flexibility of weather analysis*

**BETTER UNDERSTANDING OF WEATHER**



## Observe the Vertical Structure of Storms

- *Understand storm motion and growth by using the cross-section tool to see data at different altitudes with respect to other data points*
- *Improve your interpretation of the three dimensional area and a storm's evolution in time*
- *Perform curved cross-sections to analyze frontal boundaries and curved rain bands*

**BETTER UNDERSTANDING OF WEATHER**

Name:   Tools:   

**Map Settings**

1    **14:20:48**

2    **14:20:48**

3    **14:20:48**

4    **14:20:48**

5    **14:20:48**

6    **14:20:48**

7    **14:20:48**

8    **14:20:48**

9    **14:20:48**

10    **14:20:48**

11    **14:20:48**

12    **14:20:48**

13    **14:20:48**

14    **14:20:48**

15    **14:20:48**

16    **14:20:48**

17    **14:20:48**

18    **14:20:48**

19    **14:20:48**

20    **14:20:48**

21    **14:20:48**

22    **14:20:48**

23    **14:20:48**

24    **14:20:48**

25    **14:20:48**

26    **14:20:48**

27    **14:20:48**

28    **14:20:48**

29    **14:20:48**

30    **14:20:48**

31    **14:20:48**

32    **14:20:48**

33    **14:20:48**

34    **14:20:48**

35    **14:20:48**

36    **14:20:48**

37    **14:20:48**

38    **14:20:48**

39    **14:20:48**

40    **14:20:48**

41    **14:20:48**

42    **14:20:48**

43    **14:20:48**

44    **14:20:48**

45    **14:20:48**

46    **14:20:48**

47    **14:20:48**

48    **14:20:48**

49    **14:20:48**

50    **14:20:48**

51    **14:20:48**

52    **14:20:48**

53    **14:20:48**

54    **14:20:48**

55    **14:20:48**

56    **14:20:48**

57    **14:20:48**

58    **14:20:48**

59    **14:20:48**

60    **14:20:48**

61    **14:20:48**

62    **14:20:48**

63    **14:20:48**

64    **14:20:48**

65    **14:20:48**

66    **14:20:48**

67    **14:20:48**

68    **14:20:48**

69    **14:20:48**

70    **14:20:48**

71    **14:20:48**

72    **14:20:48**

73    **14:20:48**

74    **14:20:48**

75    **14:20:48**

76    **14:20:48**

77    **14:20:48**

78    **14:20:48**

79    **14:20:48**

80    **14:20:48**

81    **14:20:48**

82    **14:20:48**

83    **14:20:48**

84    **14:20:48**

85    **14:20:48**

86    **14:20:48**

87    **14:20:48**

88    **14:20:48**

89    **14:20:48**

90    **14:20:48**

91    **14:20:48**

92    **14:20:48**

93    **14:20:48**

94    **14:20:48**

95    **14:20:48**

96    **14:20:48**

97    **14:20:48**

98    **14:20:48**

99    **14:20:48**

100    **14:20:48**

101    **14:20:48**

102    **14:20:48**

103    **14:20:48**

104    **14:20:48**

105    **14:20:48**

106    **14:20:48**

107    **14:20:48**

108    **14:20:48**

109    **14:20:48**

110    **14:20:48**

111    **14:20:48**

112    **14:20:48**

113    **14:20:48**

114    **14:20:48**

115    **14:20:48**

116    **14:20:48**

117    **14:20:48**

118    **14:20:48**

119    **14:20:48**

120    **14:20:48**

121    **14:20:48**

122    **14:20:48**

123    **14:20:48**

124    **14:20:48**

125    **14:20:48**

126    **14:20:48**

127    **14:20:48**

128    **14:20:48**

129    **14:20:48**

130    **14:20:48**

131    **14:20:48**

132    **14:20:48**

133    **14:20:48**

134    **14:20:48**

135    **14:20:48**

136    **14:20:48**

137    **14:20:48**

138    **14:20:48**

139    **14:20:48**

140    **14:20:48**

141    **14:20:48**

142    **14:20:48**

143    **14:20:48**

144    **14:20:48**

145    **14:20:48**

146    **14:20:48**

147    **14:20:48**

148    **14:20:48**

149    **14:20:48**

150    **14:20:48**

151    **14:20:48**

152    **14:20:48**

153    **14:20:48**

154    **14:20:48**

155    **14:20:48**

156    **14:20:48**

157    **14:20:48**

158    **14:20:48**

159    **14:20:48**

160    **14:20:48**

161    **14:20:48**

162    **14:20:48**

163    **14:20:48**

164    **14:20:48**

165    **14:20:48**

166    **14:20:48**

167    **14:20:48**

168    **14:20:48**

169    **14:20:48**

170    **14:20:48**

171    **14:20:48**

172    **14:20:48**

173    **14:20:48**

174    **14:20:48**

175    **14:20:48**

176    **14:20:48**

177    **14:20:48**

178    **14:20:48**

179    **14:20:48**

180    **14:20:48**

181    **14:20:48**

182    **14:20:48**

183    **14:20:48**

184    **14:20:48**

185    **14:20:48**

186    **14:20:48**

187    **14:20:48**

188    **14:20:48**

189    **14:20:48**

190    **14:20:48**

191    **14:20:48**

192    **14:20:48**

193    **14:20:48**

194    **14:20:48**

195    **14:20:48**

196    **14:20:48**

197    **14:20:48**

198    **14:20:48**

199    **14:20:48**

200    **14:20:48**

201    **14:20:48**

202    **14:20:48**

203    **14:20:48**

204    **14:20:48**

205    **14:20:48**

206    **14:20:48**

207    **14:20:48**

208    **14:20:48**

209    **14:20:48**

210    **14:20:48**

211    **14:20:48**

212    **14:20:48**

213    **14:20:48**

214    **14:20:48**

215    **14:20:48**

216    **14:20:48**

217    **14:20:48**

218    **14:20:48**

219    **14:20:48**

220    **14:20:48**

221    **14:20:48**

222    **14:20:48**

223    **14:20:48**

224    **14:20:48**

225    **14:20:48**

226    **14:20:48**

227    **14:20:48**

228    **14:20:48**

229    **14:20:48**

230    **14:20:48**

231    **14:20:48**

232    **14:20:48**

233    **14:20:48**

234    **14:20:48**

235    **14:20:48**

236    **14:20:48**

237    **14:20:48**

238    **14:20:48**

239    **14:20:48**

## Display Data Outside the Radar Range

- *Extend observations to show convective storms beyond the radar range*
- *Layer other weather data, such as lightning data from Vaisala's Global Lightning Dataset GLD360 outside of the range of the radar*

Map Focused altitude - Preferences

Additive Factor

Name:  View Mode:    

View Features

**Available Features**

ELEVATION SMO  ALTITUDE SMO

LIGHTNING SMO  ALTITUDE SMO

17:15 UTC  
2017-06-12

**View Features**

Base Data

Version

**Layers**

Location grid

**Grids**

Radar Beams

Radar Traces

Plotting Time Labels

**Wind Speed**

Minimum value:

Max: 2475

Unit: 100000

0.25 D

Source: 25 Observations

20.00 21.00 22.00 23.00 24.00 25.00 26.00 27.00 28.00 29.00 30.00 31.00 32.00 33.00 34.00 35.00 36.00 37.00 38.00 39.00 40.00 41.00 42.00 43.00 44.00 45.00 46.00 47.00 48.00 49.00 50.00

Plot

17:15  
2017-06-12

0.25 D

## Spatial Awareness

- *Locate weather data with respect to geographical features for better situational awareness*
- *Geographic Information System (GIS) datasets are continuously updated using Open Source GeoServer*
- *Add your own GIS data sets*
- *Support for Multiple maps*

**BETTER UNDERSTANDING OF WEATHER**





## On-demand Radar Products

- *New interactive on-demand radar products (MAX, BASE, THICK and TOPS)*
- *Select the radar parameters and adjust the visualization details to focus on what matters most*
- *Use the Cursor Tool to easily see the data magnitude by placing the mouse over the weather pattern – no need to rely on the legend*

**BETTER UNDERSTANDING OF WEATHER**



# Access your Data Anywhere

Because IRIS Focus is web-based, you can access your data from anywhere. You do not have to store data on your computer — easily share your data with colleagues in other departments and outside the agency.

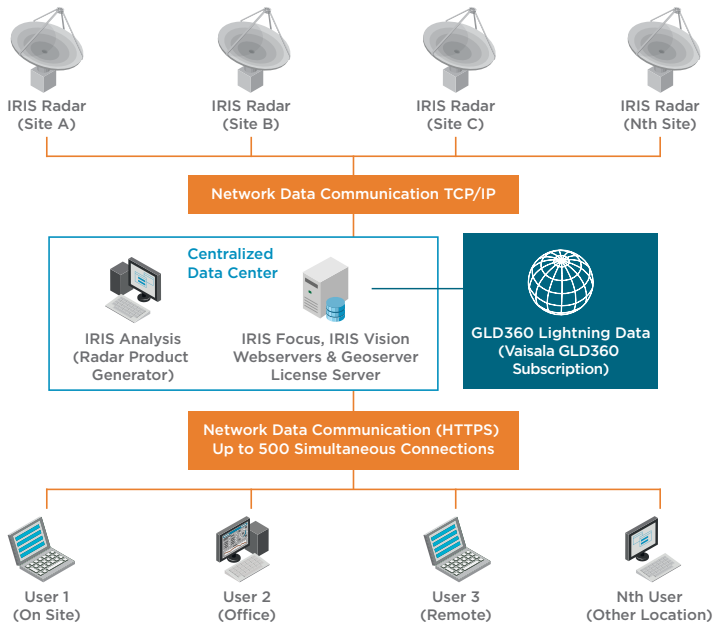
**INCREASE ACCESSIBILITY**



## Access Your Data from Anywhere

- *IRIS Focus is web-based, allowing you to access your data from anywhere*
- *Data does not have to be stored on your computer*
- *Easily share your data with colleagues in other departments and outside the agency*

**INCREASE ACCESSIBILITY**



## Tool Tips and Localized Context-Sensitive Help

- *Interactive step-by-step tutorials reduce training time*
- *Built-in tool tips and context-sensitive help aid throughout*
- *Available languages: English, Spanish, Portuguese, and Russian are available*
- *More languages can be added on request*

**INCREASE ACCESSIBILITY**



The screenshot displays a weather radar application interface. The background is a radar map of the United Kingdom, with a color scale indicating precipitation intensity. A 'Weather Products' panel is overlaid on the map, providing details for a selected product.

**Weather Products Panel:**

- Header:** 'Weather Products' with a close button (X) and a timestamp '07:05:48'.
- Product List:** A list of products:
  1. 'Line Color' (Selected)
  2. 'Outline Contoured Reflectivity'
- Product Details:**
  - Name:** Line Color
  - Category:** Reflectivity
  - Units:** dBZ
  - Color Scale:** A color bar ranging from 0 to 60 dBZ.
  - Variable:** Reflectivity
  - Units:** dBZ
- Buttons:** 'Back', 'List', and 'Next'.

**Left Panel:**

- Header:** 'Weather Products' with a close button (X) and a timestamp '07:05:48'.
- Product List:** A list of products:
  1. 'Line Color' (Selected)
  2. 'Outline Contoured Reflectivity'
- Product Details:**
  - Name:** Line Color
  - Category:** Reflectivity
  - Units:** dBZ
  - Color Scale:** A color bar ranging from 0 to 60 dBZ.
  - Variable:** Reflectivity
  - Units:** dBZ
- Buttons:** 'Add Product'.

**Map:** A radar map of the United Kingdom showing precipitation intensity. A color scale at the bottom indicates intensity levels from 0 to 60 dBZ. A timestamp '07:05' is visible on the map.

**Bottom Panel:**

- Header:** 'Weather Products' with a close button (X) and a timestamp '07:05:48'.
- Product List:** A list of products:
  1. 'Line Color' (Selected)
  2. 'Outline Contoured Reflectivity'
- Product Details:**
  - Name:** Line Color
  - Category:** Reflectivity
  - Units:** dBZ
  - Color Scale:** A color bar ranging from 0 to 60 dBZ.
  - Variable:** Reflectivity
  - Units:** dBZ
- Buttons:** 'Back', 'List', and 'Next'.

## Vaisala Total Offering

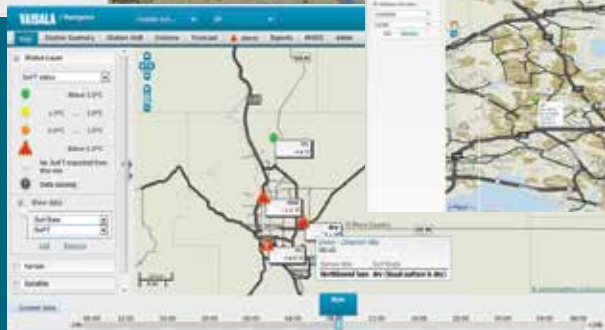
- *One-stop-shop system provider*
- *Reduces training time and allows seamless transition between two or more Vaisala products*
- *Vaisala products that use same platform:  
Observation Network Manager, AviMet,<sup>®</sup>  
Thunderstorm Manager, RoadDSS Manager  
and DigiCORA<sup>®</sup> Sounding System MW41*

**INCREASE ACCESSIBILITY**

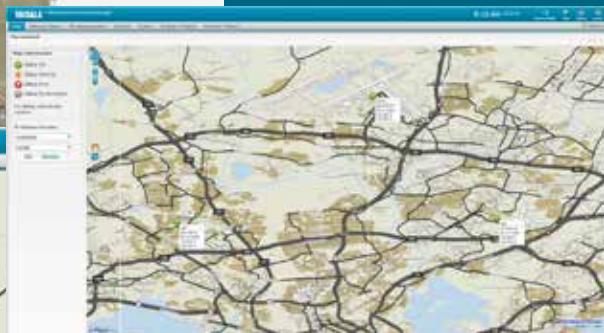


**THUNDERSTORM MANAGER**

**OBSERVATION  
NETWORK MANAGER**



**ROADSS NAVIGATOR**



**VAISALA**

Experience **More.**