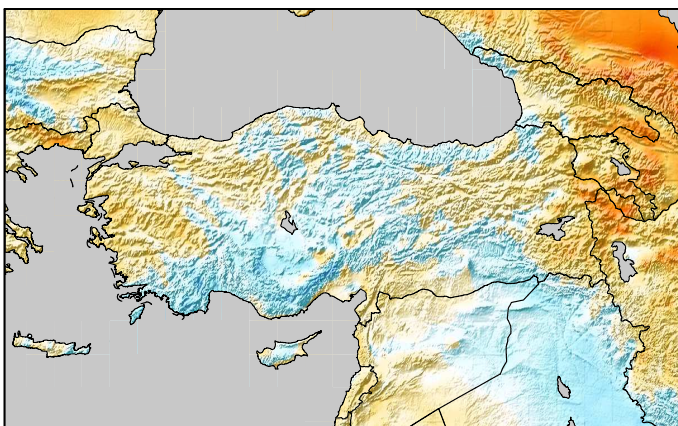
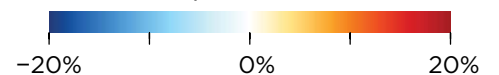


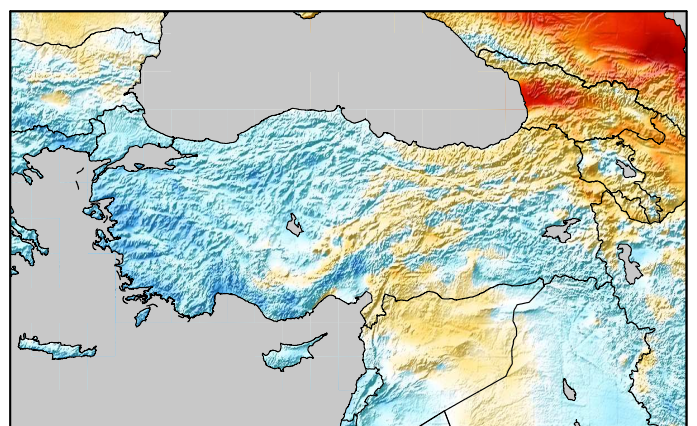
2016 Q1

The Wind Performance Maps of Turkey show departure from average wind speeds at 100 meters above ground. Vaisala conducted the analysis by comparing recent data from its continually updated meteorological dataset with 30-year averaged conditions from the same dataset.

Departure from normal  
wind speeds at 100m

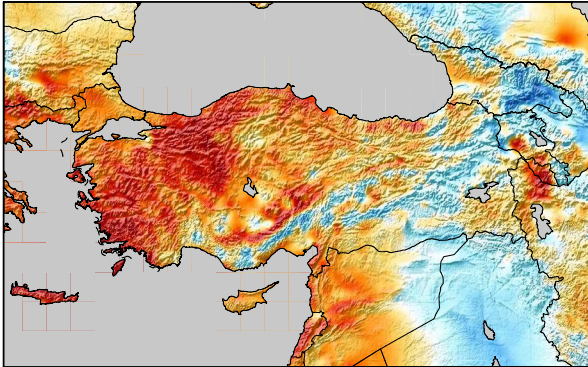


2015

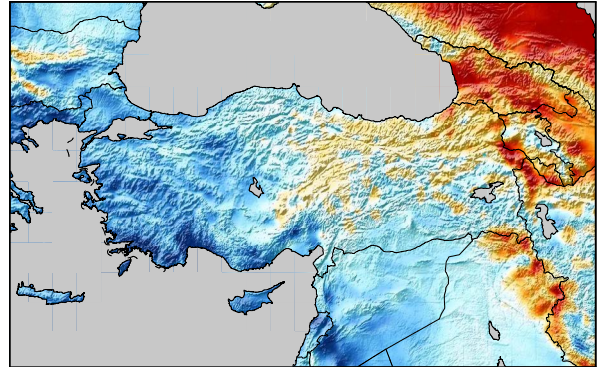


2014

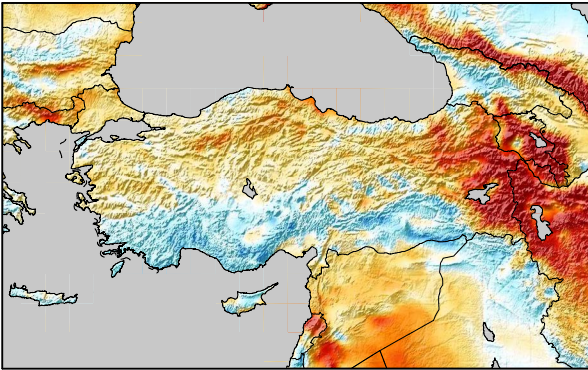




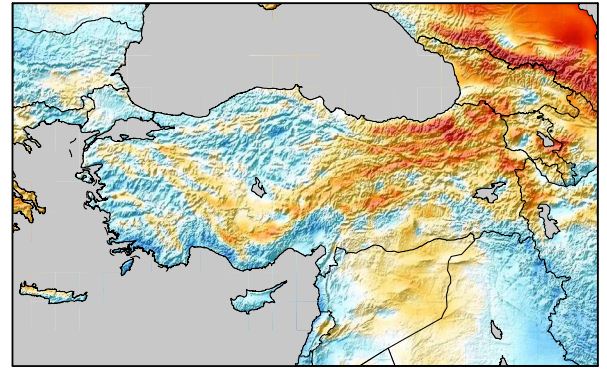
2015 Q1



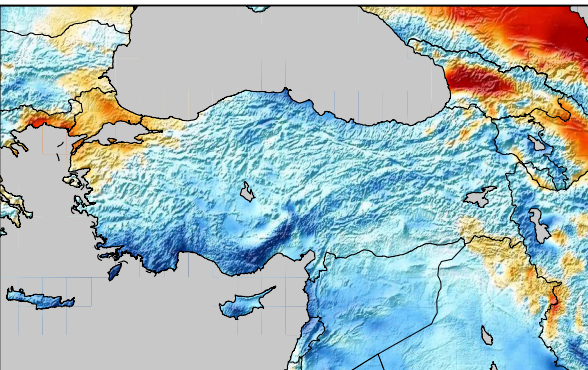
2014 Q1



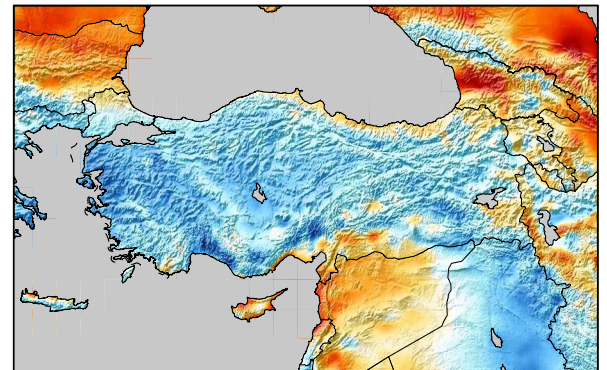
2015 Q2



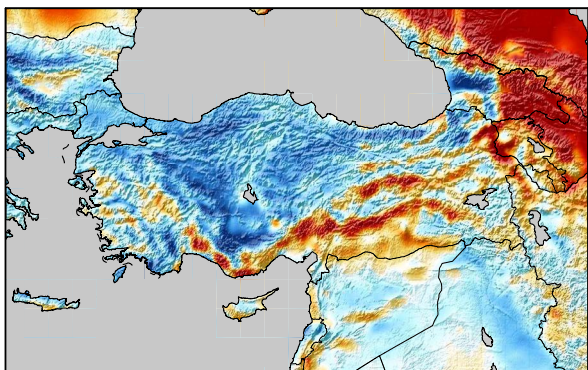
2014 Q2



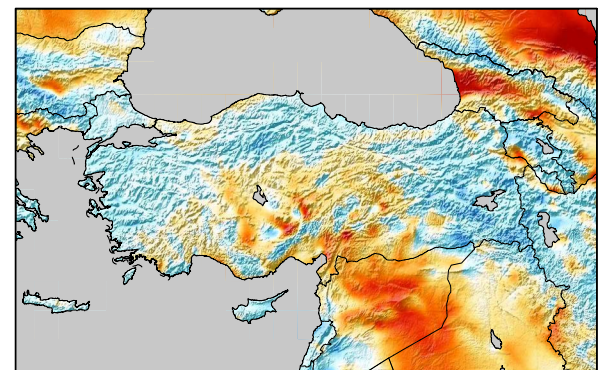
2015 Q3



2014 Q3



2015 Q4



2014 Q4