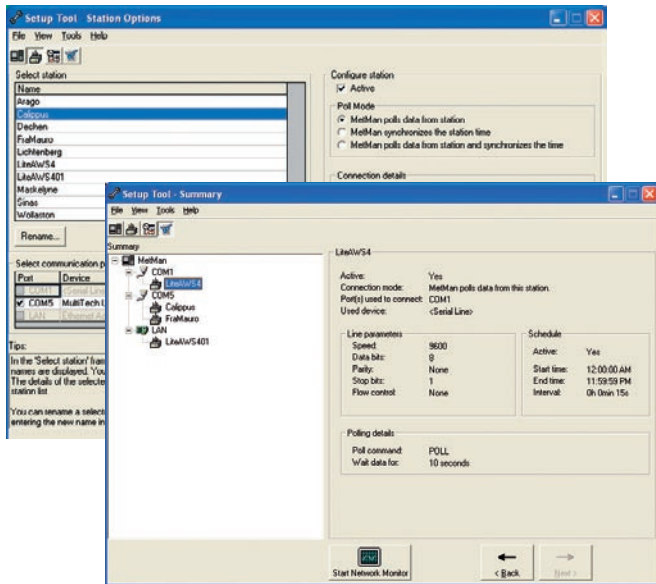


Vaisala MetMan Network Software MM100



Features

- Easy-to-use system for meteorological and hydrological data collection with versatile set of communication options
- Data collection to text files - no database administration required
- Can be upgraded to a full-scale Vaisala MetMan Network Software MM400 with an Oracle database when the network grows

Setup Tool also provides an illustrative overview on the system configuration and makes the configuration of station parameters easy.

The Vaisala MetMan Network Software MM100 is a reliable and cost-efficient Windows®-based data collection system for small meteorological and hydrological networks. It is easy to install and operate, making an ideal choice for any organisation willing to start small and retain the option to grow big.

Easy to Get Started

Setting up and using the Vaisala MetMan Network Software MM100 is easy. The installation wizard guides you through the installation procedures. Once the installation is done you can adjust the computer port, station and schedule settings with a user-friendly Setup Tool. When started, data acquisition progress can be monitored using the Network Monitor application. The system continues operating automatically, even if you logged off or even if the computer was restarted for any reason.

Message Format

The data must be sent to Vaisala MetMan Network Software MM100 in a specific format. The Vaisala SetUp Software Lizard provides a special report template for this purpose.

Data Collection Modes

There are two alternative modes for the communication port: poll mode and listen mode. In the poll mode, the computer polls data from the stations according to the schedule you have defined. In the listen mode, the communication port listens to the calls from the stations and you can define the call schedule at the station end for each station separately.

In most cases, poll mode is the recommended method for data collection. The listen mode is the preferred mode for data transfer when using SMS messages or half-duplex modems. In the poll mode, the station parameters, including the call schedule, can be set up centrally in the MM100, and this makes the network of weather stations more easily manageable. Each station can have its own data collection interval. The MM100 can also synchronize the real-time clock in the station when polling data.

Viewing Data

The collected data can be displayed on Internet using the optional Vaisala MetMan WebView software. The data is available both in graphical and table format. Data can be exported manually to .csv files.

Communication Options and Integration to External Systems

The system communicates with the weather stations using :

- Serial lines
- Dial-up AT modems
- TCP/IP sockets
- GSM SMS messages with Nokia 30 modem
- UHF radio modems
- Fixed modem line (e.g. Vaisala DXL 421)
- Data input files

Other systems can be easily integrated with MM100 by setting up an FTP server on the MM100 computer or by sharing the MM100 computer disk in a Windows® network.

Technical Data

Data Acquisition

Maximum number of simultaneous active connections:

9 (8 via serial lines, 1 TCP/IP)

Maximum number of stations supported:

100

Maximum number of observations in data files:

Limited by the available disk space

Missing data management:

Automatic/manual acquisition of missing data

Supported weather stations:

Vaisala Automatic Weather Stations MAWS101, MAWS201, MAWS301 and Vaisala Data collection and Processing System MILOS520

Data Output

XML, .csv files

Operating Systems

Windows® XP Professional and Windows® 2000

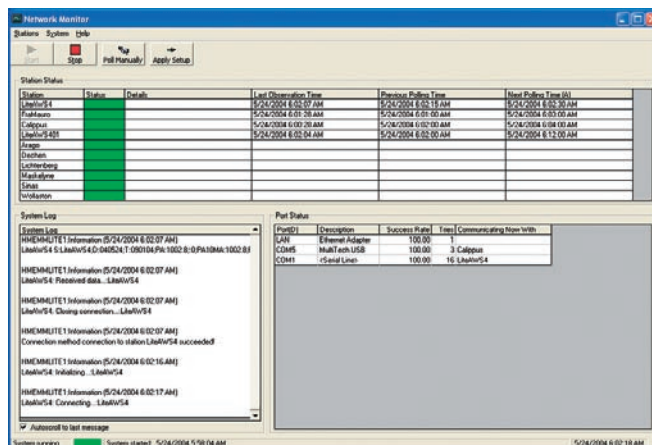
Applications

Setup Tool

Network Monitor

Options

Vaisala MetMan WebView Software



Network Monitor application gives a quick overview of the system status.



Vaisala Oyj
Helsinki, Finland
Tel. +358 9 894 91
Fax +358 9 894 92227

Vaisala GmbH
Hamburg, Germany
Tel. +49 40 839 030
Fax +49 40 839 03 110

Vaisala Ltd
Birmingham, UK
(Road Weather Products only)
Tel. +44 121 683 1200
Fax +44 121 683 1299

Vaisala Ltd
Newmarket, UK
(Upper Air and Surface Weather Products only)
Tel. +44 1638 576 200
Fax +44 1638 576 240

Vaisala SA
Paris, France
Tel. +33 1 3057 2728
Fax +33 1 3096 0858

Vaisala Inc.
Woburn, MA, USA
Tel. +1 781 933 4500
Fax +1 781 933 8029

Vaisala Inc.
Boulder, CO, USA
Tel. +1 303 499 1701
Fax +1 303 499 1767

Vaisala Inc.
Tucson, AZ, USA
(Thunderstorm Systems and Data only)
Tel. +1 520 806 7300
Fax +1 520 741 2848

Vaisala Inc. Regional Office
Blainville, QC, Canada
Tel. +1 450 430 0880
Fax +1 450 430 6410

Vaisala KK
Tokyo, Japan
Tel. +81 3 3266 9611
Fax +81 3 3266 9610

Vaisala Pty Ltd
Hawthorn, Vic., Australia
Tel. +61 3 9818 4200
Fax +61 3 9818 4522

Vaisala Beijing
Representative Office
PR.China
Tel. +86 10 8526 1199
Fax +86 10 8526 1155

Vaisala Regional Office Malaysia
Kuala Lumpur, Malaysia
Tel. +60 3 2169 7776
Fax +60 3 2169 7775

For more detailed contact information and for other Vaisala locations visit us at: www.vaisala.com