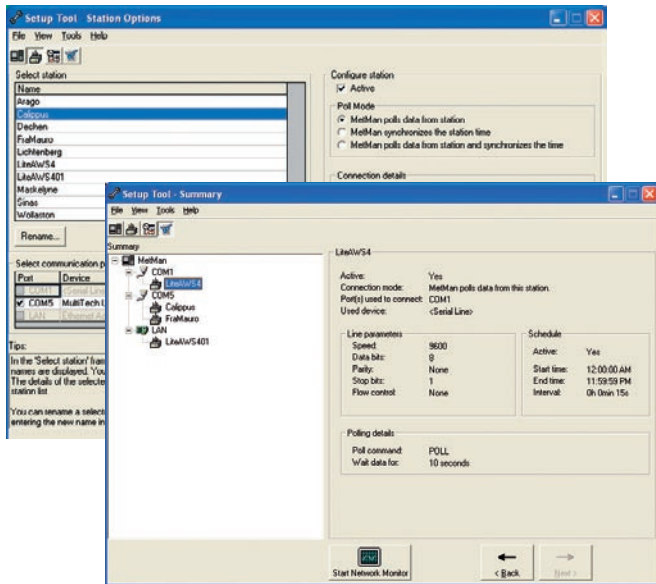


# Vaisala MetMan Network Software MM10



## Features

- Easy-to-use system for meteorological and hydrological data collection with versatile set of communication options
- Data collection to text files - no database administration required
- Can be upgraded to a full-scale Vaisala MetMan Network Software MM400 with an Oracle database when the network grows

*Setup Tool also provides an illustrative overview on the system configuration and makes the configuration of station parameters easy.*

The Vaisala MetMan Network Software MM10 is a reliable and cost-efficient Windows®-based data collection system for small meteorological and hydrological networks. It is easy to install and operate, making an ideal choice for any organisation willing to start small and retain the option to grow big.

## Easy to Get Started

Setting up and using the Vaisala MetMan Network Software MM10 is easy. The installation wizard guides you through the installation procedures. Once the installation is done you can adjust the computer port, station and schedule settings with a user-friendly Setup Tool. When started, data acquisition progress can be monitored using the Network Monitor application. The system continues operating automatically, even if you logged off or even if the computer was restarted for any reason.

## Message Format

The data must be sent to Vaisala MetMan Network Software MM10 in a specific format. The Vaisala SetUp Software Lizard provides a special report template for this purpose.

## Data Collection Modes

There are two alternative modes for the communication port: poll mode and listen mode. In the poll mode, the computer polls data from the stations according to the schedule you have defined. In the listen mode, the communication port listens to the calls from the stations and you can define the call schedule at the station end for each station separately.

In most cases, poll mode is the recommended method for data collection. The listen mode is the preferred mode for data transfer when using SMS messages or half-duplex modems. In the poll mode, the station parameters, including the call schedule, can be set up centrally in the MM10, and this makes the network of weather stations more easily manageable. Each station can have its own data collection interval. The MM10 can also synchronize the real-time clock in the station when polling data.

## Viewing Data

The collected data can be displayed on Internet using the optional Vaisala MetMan WebView software. The data is available both in graphical and table format. Data can be exported manually to .csv files.

## Communication Options and Integration to External Systems

The system communicates with the weather stations using :

- Serial lines
- Dial-up AT modems
- TCP/IP sockets
- GSM SMS messages with Nokia 30 modem
- UHF radio modems
- Fixed modem line (e.g. Vaisala DXL 421)
- Data input files

Other systems can be easily integrated with MM10 by setting up an FTP server on the MM10 computer or by sharing the MM10 computer disk in a Windows® network.

# Technical Data

## Data Acquisition

Maximum number of simultaneous active connections:

3 (2 via serial lines, 1 TCP/IP)

Maximum number of stations supported:

10

Maximum number of observations in data files:

Limited by the available disk space

Supported weather stations:

Vaisala Automatic Weather Stations MAWS101, MAWS201, MAWS301 and Vaisala Data collection and Processing System MILOS520

## Data Output

XML, .csv files

## Operating System

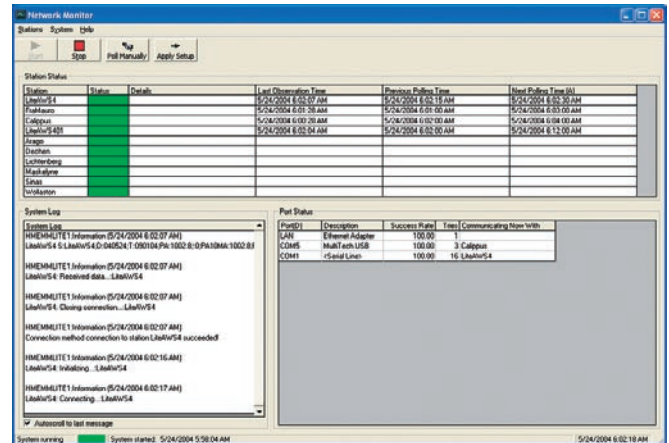
Windows® XP Professional and Windows® 2000

## Applications

Network Monitor  
Setup Tool

## Options

Vaisala MetMan WebView Software



*Network Monitor application gives a quick overview of the system status.*



**Vaisala Oyj**  
Helsinki, Finland  
Tel. +358 9 894 91  
Fax +358 9 894 92227

**Vaisala GmbH**  
Hamburg, Germany  
Tel. +49 40 839 030  
Fax +49 40 839 03 110

**Vaisala Ltd**  
Birmingham, UK  
(Road Weather Products only)  
Tel. +44 121 683 1200  
Fax +44 121 683 1299

**Vaisala Ltd**  
Newmarket, UK  
(Upper Air and Surface Weather Products only)  
Tel. +44 1638 576 200  
Fax +44 1638 576 240

**Vaisala SA**  
Paris, France  
Tel. +33 1 3057 2728  
Fax +33 1 3096 0858

**Vaisala Inc.**  
Woburn, MA, USA  
Tel. +1 781 933 4500  
Fax +1 781 933 8029

**Vaisala Inc.**  
Boulder, CO, USA  
Tel. +1 303 499 1701  
Fax +1 303 499 1767

**Vaisala Inc.**  
Tucson, AZ, USA  
(Thunderstorm Systems and Data only)  
Tel. +1 520 806 7300  
Fax +1 520 741 2848

**Vaisala Inc. Regional Office**  
Blainville, QC, Canada  
Tel. +1 450 430 0880  
Fax +1 450 430 6410

**Vaisala KK**  
Tokyo, Japan  
Tel. +81 3 3266 9611  
Fax +81 3 3266 9610

**Vaisala Pty Ltd**  
Hawthorn, Vic., Australia  
Tel. +61 3 9818 4200  
Fax +61 3 9818 4522

**Vaisala Beijing**  
Representative Office  
PR.China  
Tel. +86 10 8526 1199  
Fax +86 10 8526 1155

**Vaisala Regional Office Malaysia**  
Kuala Lumpur, Malaysia  
Tel. +60 3 2169 7776  
Fax +60 3 2169 7775

For more detailed contact information and for other Vaisala locations visit us at: [www.vaisala.com](http://www.vaisala.com)