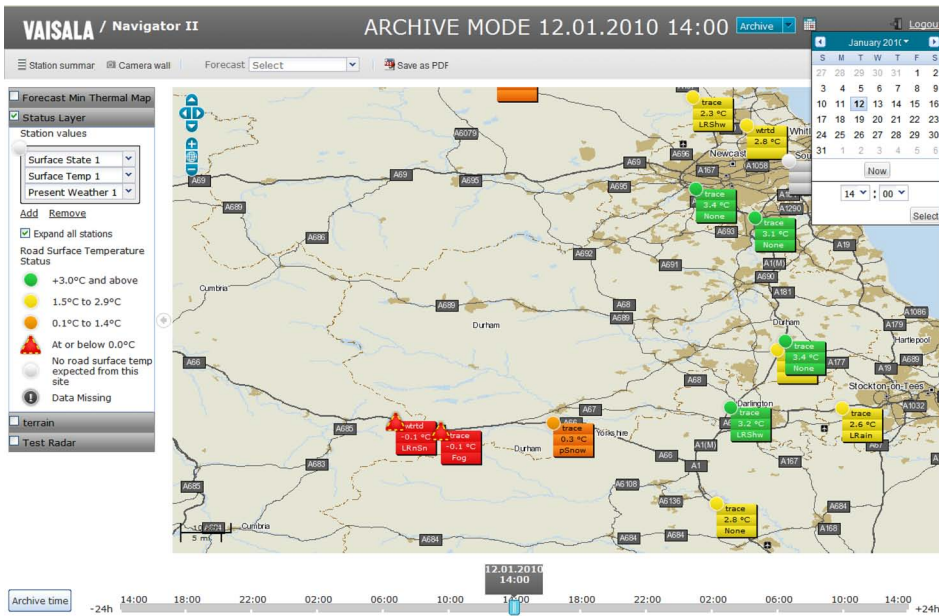


Vaisala Road Weather Navigator 2.0 WID733



Archive mode of the Vaisala Road Weather Navigator.

The Vaisala Road Weather Navigator 2.0 WID733 is a hosted web service for viewing past, present and future road weather data.

The application displays data collected by the Vaisala Global Data Center and handles data collection from the road weather networks around the world. The application consists of a set of dynamic web pages that can be viewed with a simple Internet connection. The Vaisala Road Weather Navigator also features GIS maps, which means new sites can be added quickly, and data location on the maps more accurately.

Customizable Views

The Vaisala Road Weather Navigator 2.0 has been designed with user convenience in mind. You can easily customize the application to suit your needs. This will allow you to view only the important and relevant information, which will help you

focus quickly and easily on the job at hand.

Browse Observations and Forecasts with Ease

The application has many features that make browsing the data very easy. For instance, with the powerful Time Slider feature you can quickly see on the map page all the observations and any forecasts that are available for 24 hours on either side of the actual time. This gives an unparalleled overview of past, present and future conditions at a glance. It also takes less time to train staff on how to use the program, which results in a quicker return on investment.

All the Relevant Data in the Same Application

One of the key features in the Vaisala Road Weather Navigator 2.0 is the ability to compare and contrast road weather information with other

relevant data. Where available this could include weather radar, satellite and traffic counting data, all in the same application. With all this data in the same place you can easily see how the weather affects traffic flow, and plan your actions accordingly. In addition, some features can be conveniently animated for easy representation of moving weather events and developing situations that need monitoring.

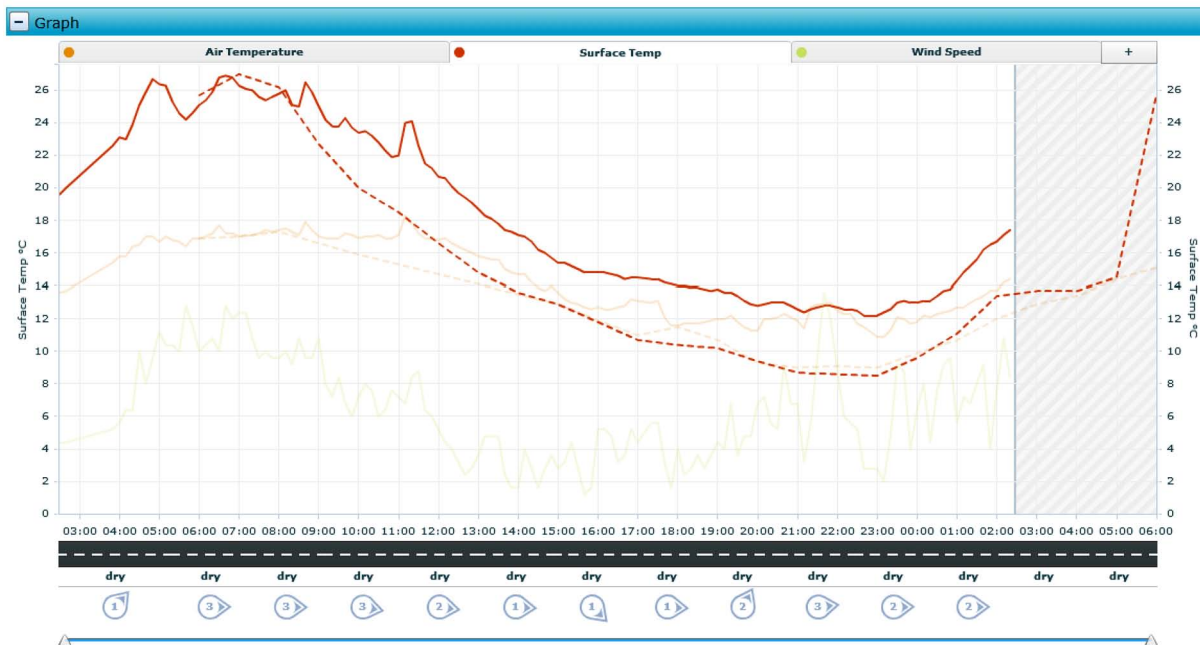
System requirements

- Internet connection
- Web browser – supported browsers are Microsoft Internet Explorer v. 7 or later and Mozilla Firefox v. 3 or later
- Cookies must be enabled
- Adobe Flash Player v. 10 or later
- To view PDF reports, Adobe Reader v. 9 or later
- To view data exports, Microsoft Excel v. 2003 or later

Features/Benefits

- Easy-to-use interface with customizable views
- No need to install software on clients - works with latest versions of Microsoft Internet Explorer and Mozilla Firefox browsers
- Easy to implement and maintain
- See real-time data on a map, table or graph
- Easy access to service from anywhere with an Internet connection
- GIS maps optimized for displaying road weather data
- Historical data available
- Compare and contrast road weather observations with other road information all in the same application
- Configurable e-mail and SMS alerts
- Supports animation of radar, satellite and other map based information where available
- Generate reports quickly and in a printer friendly format
- Station data export for easy data analysis offline

Single station graph below.



VAISALA

For more information, visit www.vaisala.com or contact us at sales@vaisala.com

Ref. B211059EN-A ©Vaisala 2010
 This material is subject to copyright protection, with all copyrights retained by Vaisala and its individual partners. All rights reserved. Any logos and/or product names are trademarks of Vaisala or its individual partners. The reproduction, transfer, distribution or storage of information contained in this brochure in any form without the prior written consent of Vaisala is strictly prohibited. All specifications — technical included — are subject to change without notice.

