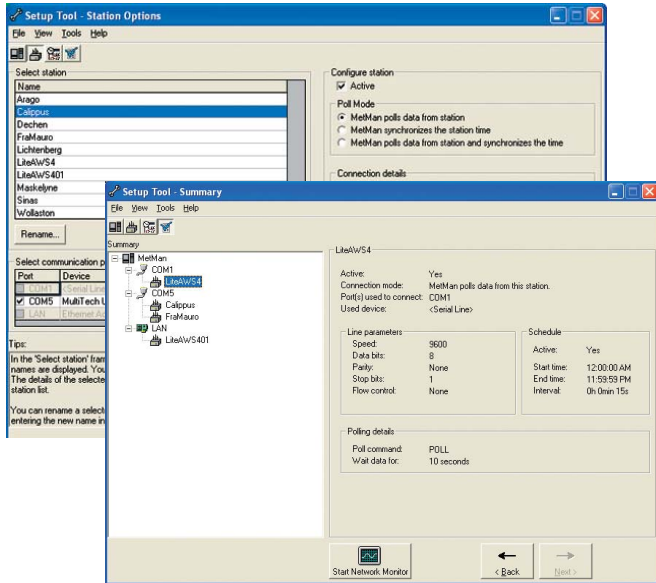


Vaisala MetMan Network Software MM100



Features

- Easy-to-use system for meteorological and hydrological data collection with versatile set of communication options
- Data collection to text files - no database administration required
- Can be upgraded to a full-scale Vaisala MetMan Network Software MM400 with an Oracle database when the network grows

Setup Tool also provides an illustrative overview on the system configuration and makes the configuration of station parameters easy.

The Vaisala MetMan Network Software MM100 is a reliable and cost-efficient Windows®-based data collection system for small meteorological and hydrological networks. It is easy to install and operate, making an ideal choice for any organisation willing to start small and retain the option to grow big.

Easy to Get Started

Setting up and using the Vaisala MetMan Network Software MM100 is easy. The installation wizard guides you through the installation procedures. Once the installation is done you can adjust the computer port, station and schedule settings with a user-friendly Setup Tool. When started, data acquisition progress can be monitored using the Network Monitor application. The system continues operating automatically, even if you logged off or even if the computer was restarted for any reason.

Message Format

The data must be sent to Vaisala MetMan Network Software MM100 in a specific format. The Vaisala SetUp Software Lizard provides a special report template for this purpose.

Data Collection Modes

There are two alternative modes for the communication port: poll mode and listen mode. In the poll mode, the computer polls data from the stations according to the schedule you have defined. In the listen mode, the communication port listens to the calls from the stations and you can define the call schedule at the station end for each station separately.

In most cases, poll mode is the recommended method for data collection. The listen mode is the preferred mode for data transfer when using SMS messages or half-duplex modems. In the poll mode, the station parameters, including the call schedule, can be set up centrally in the MM100, and this makes the network of weather stations more easily manageable. Each station can have its own data collection interval. The MM100 can also synchronize the real-time clock in the station when polling data.

Viewing Data

The collected data can be displayed on Internet using the optional Vaisala MetMan WebView software. The data is available both in graphical and table format. Data can be exported manually to .csv files.

Communication Options and Integration to External Systems

The system communicates with the weather stations using :

- Serial lines
- Dial-up AT modems
- TCP/IP sockets
- GSM SMS messages with Nokia 30 modem
- UHF radio modems
- Fixed modem line (e.g. Vaisala DXL 421)
- Data input files

Other systems can be easily integrated with MM100 by setting up an FTP server on the MM100 computer or by sharing the MM100 computer disk in a Windows® network.

Technical Data

Data Acquisition

Maximum number of simultaneous active connections:

9 (8 via serial lines, 1 TCP/IP)

Maximum number of stations supported:

100

Maximum number of observations in data files:

Limited by the available disk space

Missing data management:

Automatic/manual acquisition of missing data

Supported weather stations:

Vaisala Automatic Weather Stations MAWS101, MAWS201, MAWS301 and Vaisala Data collection and Processing System MILOS520

Data Output

XML, .csv files

Operating Systems

Windows® XP Professional and Windows® 2000

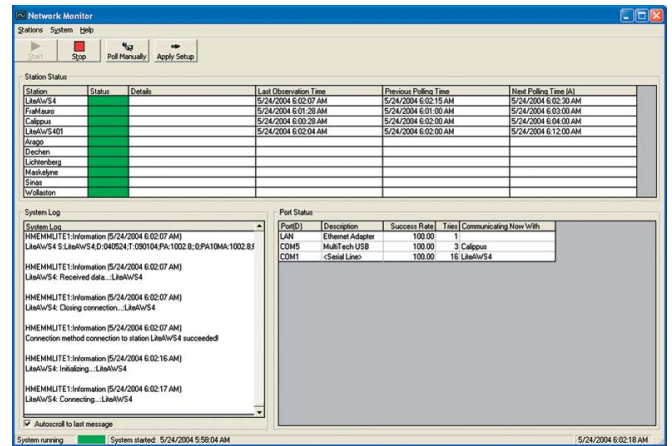
Applications

Setup Tool

Network Monitor

Options

Vaisala MetMan WebView Software



Network Monitor application gives a quick overview of the system status.

VAISALA

Vaisala Oyj
Helsinki, Finland
Tel. +358 9 894 91
Fax +358 9 8949 2227
E-mail sales@vaisala.com

For more detailed contact information and for other Vaisala locations visit us at: www.vaisala.com