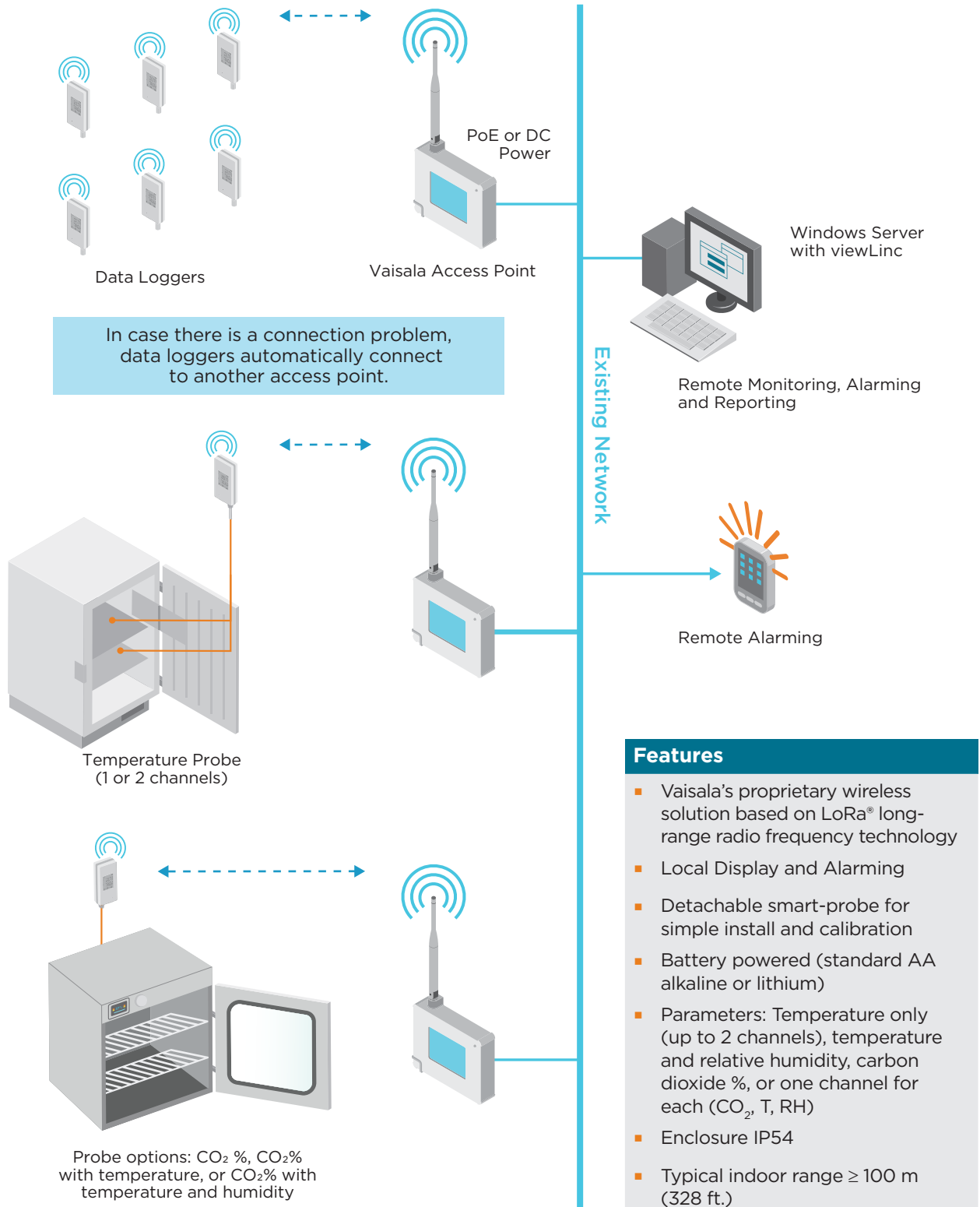
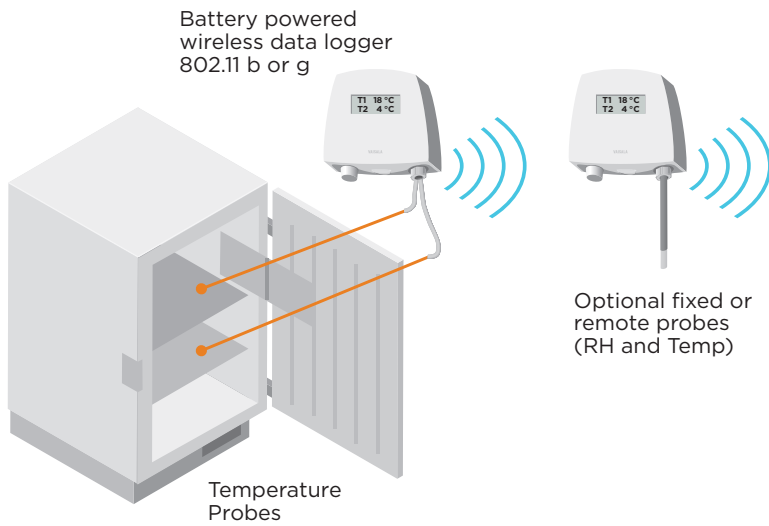


## 1 VaiNet Long-range Wireless Monitoring



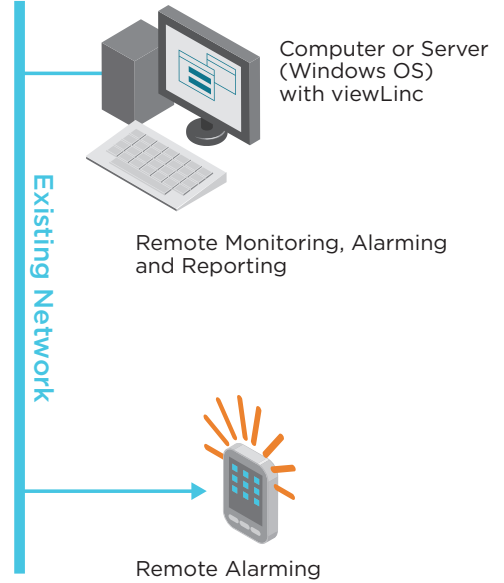
## 2

### Wi-Fi Data Loggers



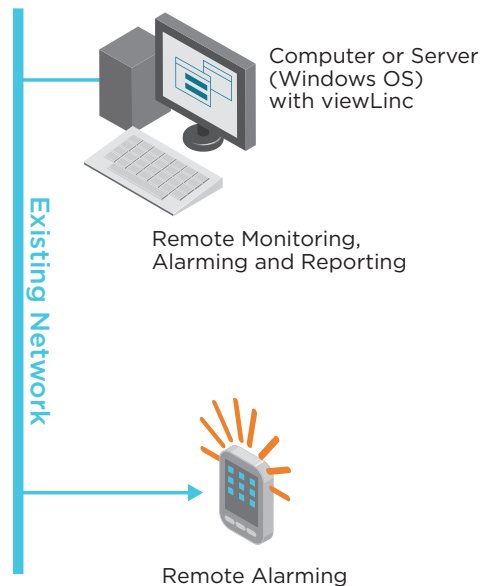
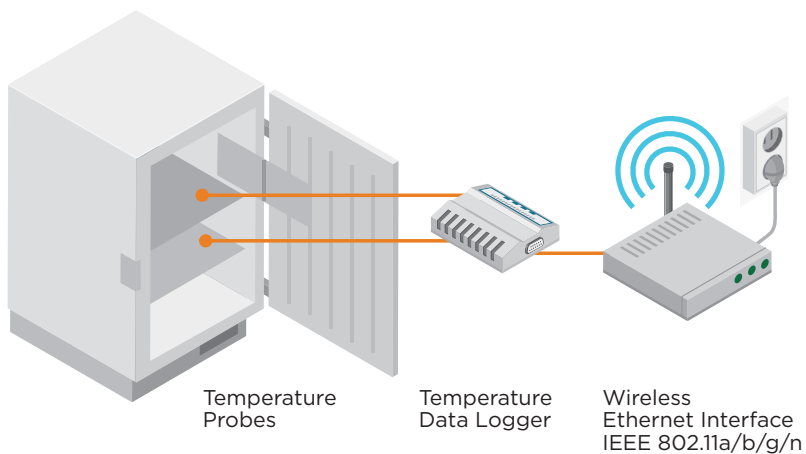
#### Features

- Local display and alarm status
- External probes available
- Battery powered
- Parameters include: temperature, humidity, analog and contact inputs
- Enclosure NEMA rating: IP65



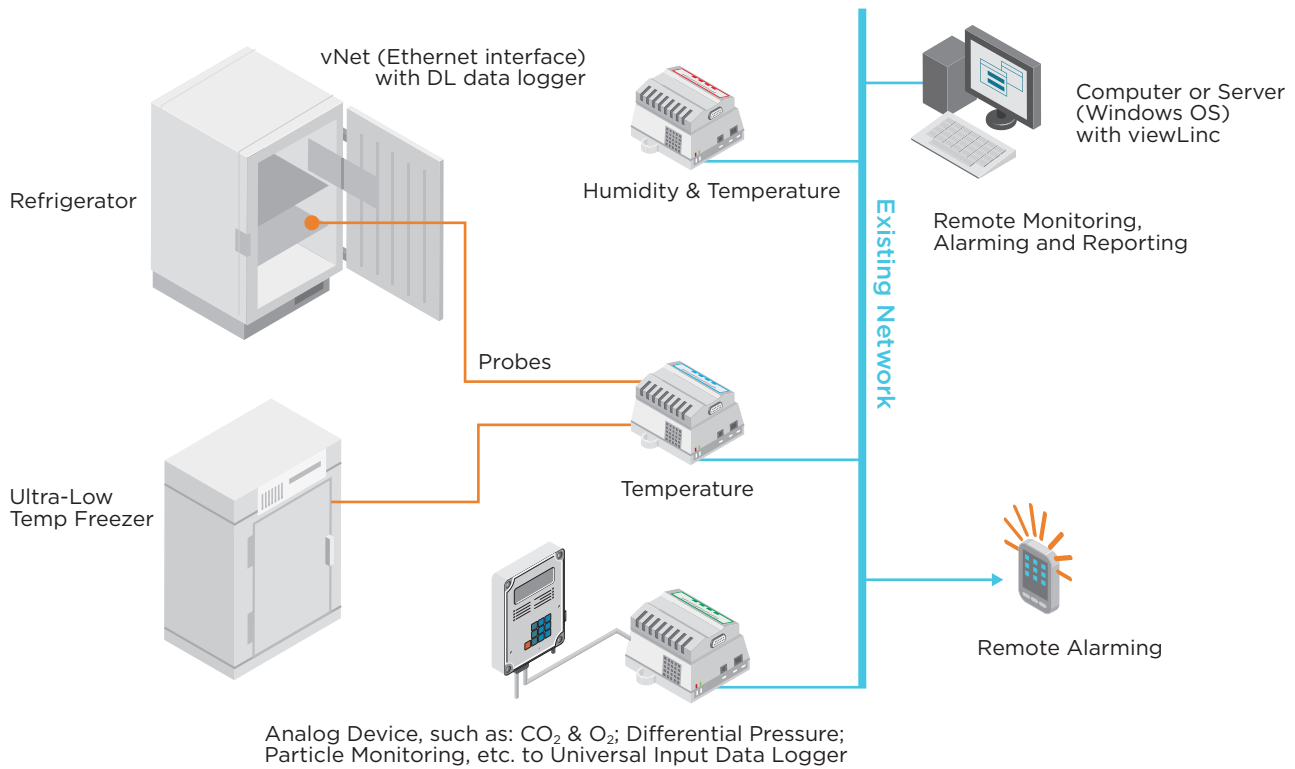
## 3

### Standard Wi-Fi Adaptor



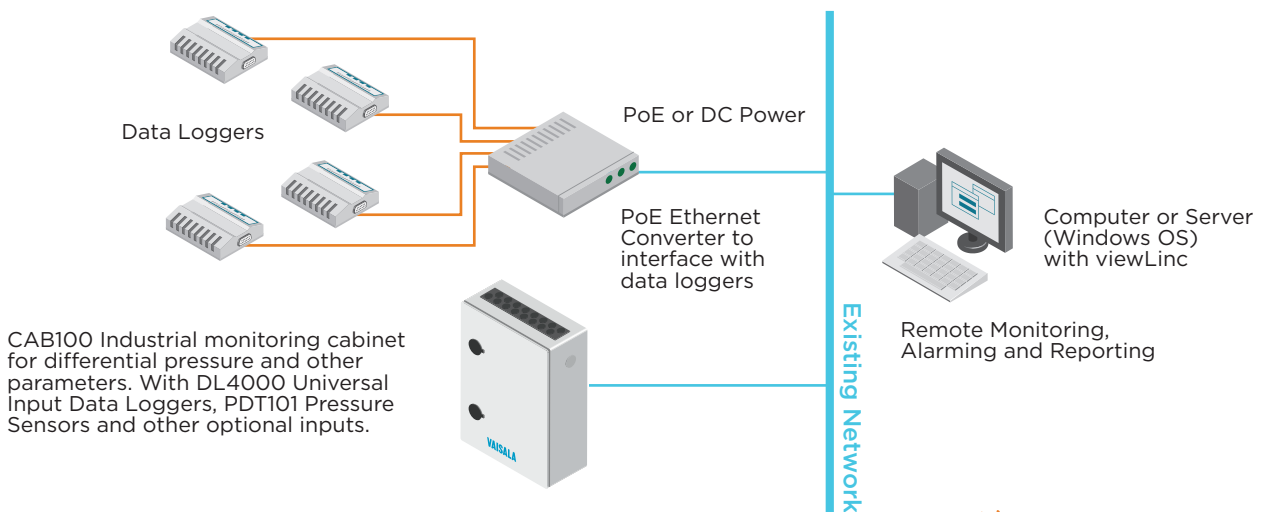
# 4

## Power over Ethernet vNet PoE



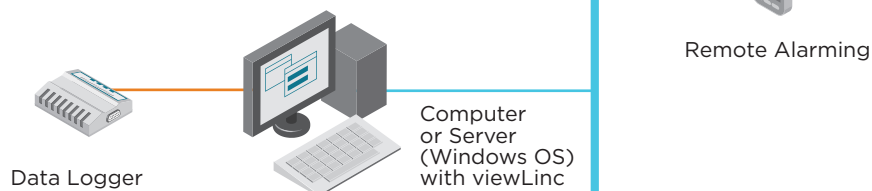
# 5

## Multi-port Ethernet



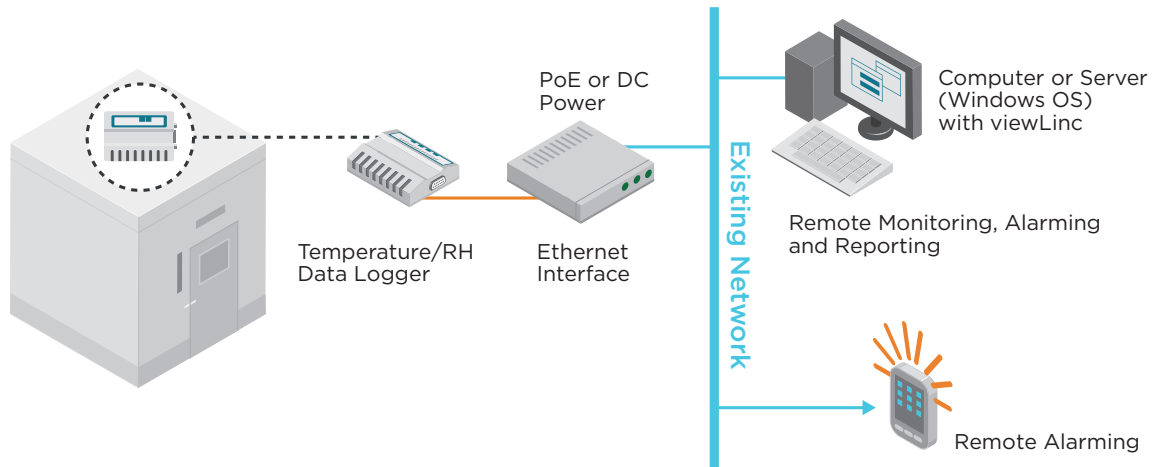
# 6

## Direct to PC via USB



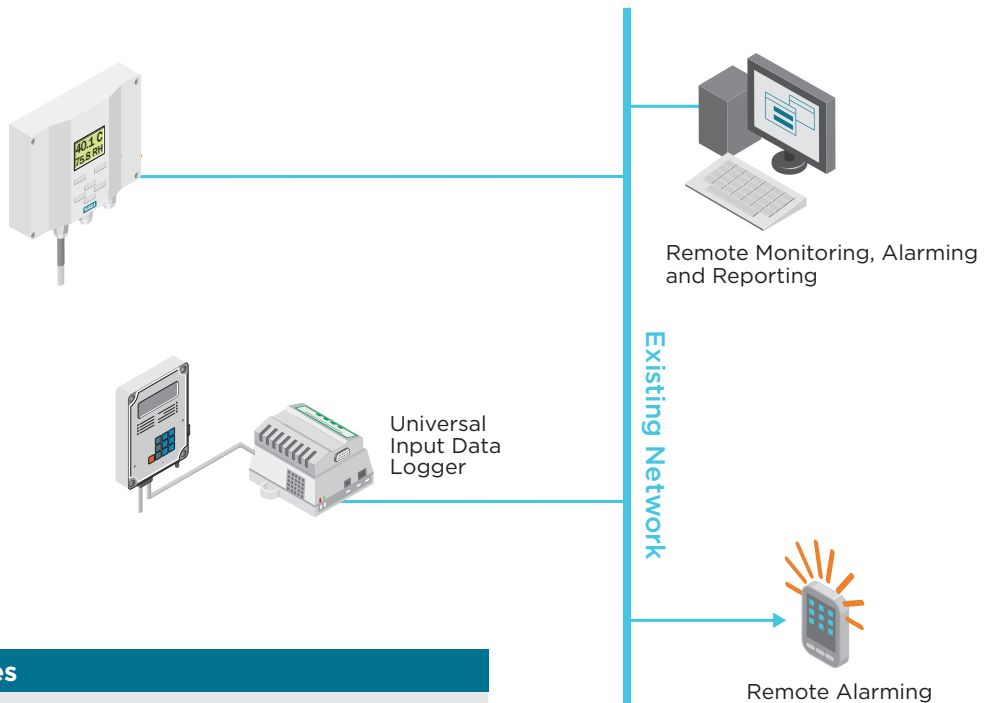
# 7

## RH Chamber Ethernet



# 8

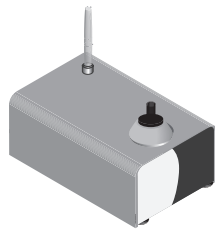
## Transmitters



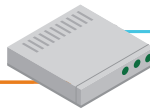
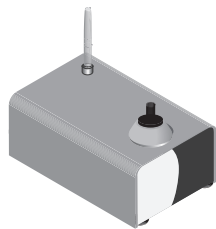
### Features

- Local display
- External probes available
- Parameters include: humidity, temperature, dewpoint, barometric pressure, CO<sub>2</sub>
- Enclosure NEMA rating: IP65

Add devices that communicate over Modbus TCP & RTU: particle counters, and other Modbus devices.



Modbus TCP



Modbus RTU



Windows Server with viewLinc

Remote Monitoring, Alarming and Reporting



Remote Alarming

Existing Network

Connect a variety of probes to viewLinc through the Vaisala Indigo host device to measure CO<sub>2</sub>, Vaporized H<sub>2</sub>O<sub>2</sub>, humidity and temperature.



Ethernet Interface

